

## Anti-SBK1 Antibody

Catalog Number: A17120

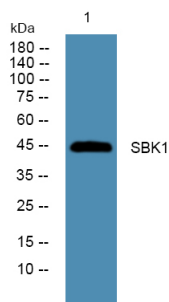
### Overview

Product Name	Anti-SBK1 Antibody
Reactive Species	Human, Mouse, Rat
Description	Boster Bio Anti-SBK1 Antibody catalog # A17120. Tested in WB, ELISA applications. This antibody reacts with Human, Mouse, Rat.
Application	ELISA, WB
Clonality	Polyclonal
Formulation	Liquid form in PBS containing 50% glycerol, and 0.02% sodium azide.
Storage Instructions	Store at -20°C for one year. For short term storage and frequent use, store at 4°C for up to one month. Avoid repeated freeze-thaw cycles.
Host	Rabbit
Uniprot ID	Q52WX2

### Technical Details

Immunogen	Synthesized peptide derived from part region of human protein
Isotype	IgG
Form	Liquid
Concentration	1 mg/ml
Purification	SBK1 antibody was affinity-purified from rabbit antiserum by affinity-chromatography using epitope-specific immunogen.
Suggested Dilutions	WB 1:500-2000 ELISA 1:5000-20000

## Anti-SBK1 Antibody (A17120) Images



Western blot analysis of lysates from SW480 cells, primary antibody was diluted at 1:1000, 4°over night

## Submit a product review to Biocompare.com

Submit a review of this product to Biocompare.com to receive a \$20 Amazon.com giftcard! Your reviews help your fellow scientists make the right decisions. Thank you for your contribution.



Anti-SBK1 Antibody

For Research Use Only. Not for use in diagnostic procedures.