

## Anti-Protein yippee-like 4 YPEL4 Antibody

Catalog Number: A17179

### About YPEL4

YPEL4 (yippee-like 4) belongs to a family of five yippee-like proteins, all of which localize to the centrosome or mitotic spindle and are widely expressed in both adult and fetal tissue. This localization plus the fact that the family of human YPEL proteins share a high degree of sequence homology across species suggests that these proteins may have a conserved function involved in cell division. YPEL4 is ubiquitously expressed in adult tissues and has been shown to associate with the major vault protein (MVP). It has been suggested that MVP can inhibit YPEL4's ability to activate Elk-1 in the MAPK signaling pathway.

### Overview

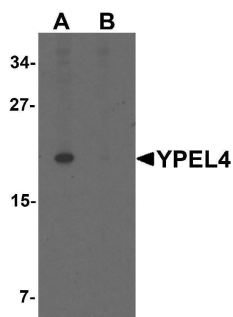
Product Name	Anti-Protein yippee-like 4 YPEL4 Antibody
Reactive Species	Human, Mouse
Description	Boster Bio Anti-Protein yippee-like 4 YPEL4 Antibody (Catalog # A17179). Tested in ELISA, WB, ICC, IF applications. This antibody reacts with Human, Mouse.
Application	ELISA, IF, ICC, WB
Clonality	Polyclonal
Formulation	YPEL4 Antibody is supplied in PBS containing 0.02% sodium azide.
Storage Instructions	YPEL4 antibody can be stored at 4°C for three months and -20°C, stable for up to one year. Avoid repeated freeze-thaw cycles. Antibodies should not be exposed to prolonged high temperatures.
Host	Rabbit
Uniprot ID	Q96NS1

### Technical Details

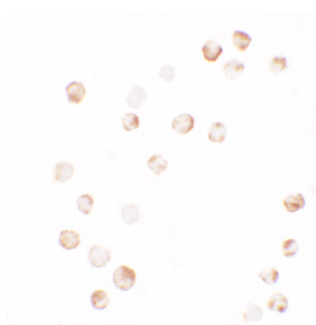
Immunogen	YPEL4 antibody was raised against a 12 amino acid synthetic peptide near the amino terminus of human YPEL4. The immunogen is located within the first 50 amino acids of YPEL4.
Predicted Reactive Species	Rat
Isotype	IgG
Form	Liquid
Concentration	1 mg/mL
Purification	YPEL4 Antibody is affinity chromatography purified via peptide column.
Suggested Dilutions	YPEL4 antibody can be used for detection of YPEL4 by Western blot at 1 ug/mL. Antibody validated: Western Blot in mouse samples; Immunocytochemistry in human samples and

Immunofluorescence in human samples. All other applications and species not yet tested. Optimal dilutions for each application should be determined by the researcher.

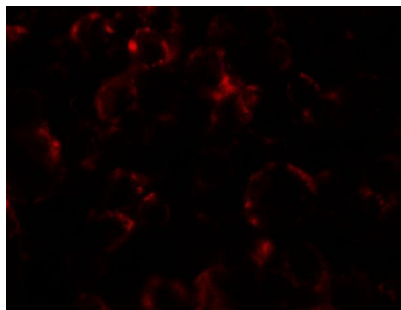
## Anti-Protein yippee-like 4 YPEL4 Antibody (A17179) Images



Western blot analysis of YPEL4 in SW480 cell lysate with YPEL4 antibody at 1 ug/mL in (A) the absence and (B) the presence of blocking peptide.



Immunocytochemistry of YPEL4 in SW480 cells with YPEL4 antibody at 2.5 ug/ml.



Immunofluorescence of YPEL4 in SW480 cells with YPEL4 antibody at 5 ug/ml.

### Submit a product review to [Biocompare.com](https://www.biocompare.com)

Submit a review of this product to [Biocompare.com](https://www.biocompare.com) to receive a \$20 Amazon.com giftcard! Your reviews help your fellow scientists make the right decisions. Thank you for your contribution.



Anti-Protein yippee-like 4 YPEL4 Antibody

For Research Use Only. Not for use in diagnostic procedures.