

Anti-TMEM168 Antibody

Catalog Number: A17219-1

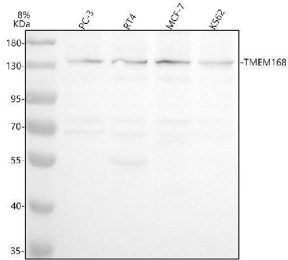
Overview

Product Name	Anti-TMEM168 Antibody
Reactive Species	Human, Mouse, Rat
Description	Boster Bio Anti-TMEM168 Antibody catalog # A17219-1. Tested in WB, IHC, IP, ELISA applications. This antibody reacts with Human, Mouse, Rat.
Application	ELISA, IP, IHC, WB
Clonality	Polyclonal
Formulation	500 ug/ml antibody with PBS, 0.02% NaN ₃ , 1 mg stabilizing protein and 50% glycerol This antibody is supplied in a stabilized formulation. Compatibility with conjugation reactions depends on the chemistry of the conjugation method used. For conjugation methods that are not compatible with the stabilizing components present in this formulation, a carrier-free antibody format is required.
Storage Instructions	12 months from date of receipt at -20°C as supplied. 6 months at 2 to 8°C after reconstitution. Avoid repeated freezing and thawing.
Host	Rabbit
Uniprot ID	Q9H0V1

Technical Details

Immunogen	E.coli-derived human TMEM168 recombinant protein (Position: E190-K425).
Form	Liquid
Concentration	500 ug/ml
Purification	Immunogen affinity purified.
Suggested Dilutions	Western blot, 1:500-2000 Immunohistochemistry, 1:50-400 ImmunoPrecipitation, 1:250-300 ELISA, 1:100-1000

Anti-TMEM168 Antibody (A17219-1) Images



Western blot analysis of TMEM168 using anti-TMEM168 antibody (A17219-1). Electrophoresis was performed on a 8% SDS-PAGE gel at 80V (Stacking gel) / 120V (Resolving gel) for 2 hours. The sample well of each lane was loaded with 30 ug of sample under reducing conditions. Lane 1: human PC-3 whole cell lysates, Lane 2: human RT4 whole cell lysates, Lane 3: human MCF-7 whole cell lysates, Lane 4: human K562 whole cell lysates. After electrophoresis, proteins were transferred to a nitrocellulose membrane at 150 mA for 50-90 minutes. Blocked the membrane with 5% non-fat milk/TBS for 1.5 hour at RT. The membrane was incubated with rabbit anti-TMEM168 antigen affinity purified polyclonal antibody (A17219-1) at 1:1000 overnight at 4°C, then washed with TBS-0.1%Tween 3 times with 5 minutes each and probed with a goat anti-rabbit IgG-HRP secondary antibody at a dilution of 1:5000 for 1.5 hour at RT. The signal is developed using an ECL Plus Western Blotting Substrate (Catalog # AR1196-200) with Tanon 5200 system. A specific band was detected for TMEM168 at approximately 130 kDa. The expected band size for TMEM168 is at 80 kDa.

Submit a product review to Biocompare.com

Submit a review of this product to Biocompare.com to receive a \$20 Amazon.com giftcard! Your reviews help your fellow scientists make the right decisions. Thank you for your contribution.



Anti-TMEM168 Antibody

For Research Use Only. Not for use in diagnostic procedures.