

Anti-ZFAND1 Rabbit Polyclonal Antibody

Catalog Number: A17222

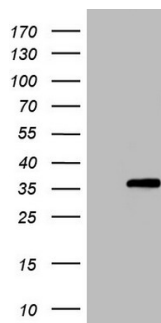
Overview

| | |
|----------------------|--|
| Product Name | Anti-ZFAND1 Rabbit Polyclonal Antibody |
| Reactive Species | Human |
| Description | Boster Bio Rabbit polyclonal ZFAND1 Antibody. Catalog# A17222. Tested in WB. This antibody reacts with Human. |
| Application | WB |
| Clonality | Polyclonal |
| Formulation | PBS (pH 7.3) containing 1% stabilizing protein, 50% glycerol and 0.02% sodium azide. This antibody is supplied in a stabilized formulation. Compatibility with conjugation reactions depends on the chemistry of the conjugation method used. For conjugation methods that are not compatible with the stabilizing components present in this formulation, a carrier-free antibody format is required. |
| Storage Instructions | Store at -20°C as received. |
| Host | Rabbit |
| Uniprot ID | Q8TCF1 |

Technical Details

| | |
|---------------------|---|
| Immunogen | Synthetic peptide conjugated to KLH derived from within residues 100-170 of Human ZFAND1. |
| Isotype | IgG |
| Concentration | 1 mg/ml |
| Purification | Purified from the immunized serum by affinity chromatography (Protein A/G) |
| Suggested Dilutions | WB 1:500 |

Anti-ZFAND1 Rabbit Polyclonal Antibody (A17222) Images



HEK293T cells were transfected with the pCMV6-ENTRY control (Left lane) or pCMV6-ENTRY ZFAND1 (Right lane) cDNA for 48 hrs and lysed. Equivalent amounts of cell lysates (5 ug per lane) were separated by SDS-PAGE and immunoblotted with Rabbit ant.

Submit a product review to Biocompare.com

Submit a review of this product to Biocompare.com to receive a \$20 Amazon.com giftcard! Your reviews help your fellow scientists make the right decisions. Thank you for your contribution.



Anti-ZFAND1 Rabbit Polyclonal Antibody

For Research Use Only. Not for use in diagnostic procedures.