

Anti-Protein TOPAZ1 TOPAZ1 Antibody

Catalog Number: A17257

About TOPAZ1

The testis and ovary specific PAZ domain containing 1 (TOPAZ1) protein is a highly conserved protein that is highly expressed in the gonads during germ cell meiosis, suggesting that it may play a role in germ cell development (1). It contains a PAZ domain and a zinc finger domain and is exclusively expressed in adult testis and fetal ovary.

Overview

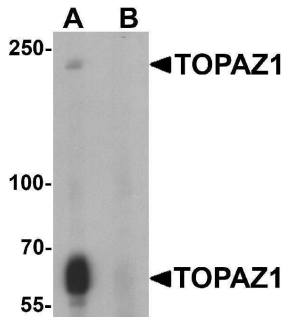
Product Name	Anti-Protein TOPAZ1 TOPAZ1 Antibody
Reactive Species	Human, Mouse, Rat
Description	Boster Bio Anti-Protein TOPAZ1 TOPAZ1 Antibody (Catalog # A17257). Tested in ELISA, WB, IHC-P, IF applications. This antibody reacts with Human, Mouse, Rat.
Application	ELISA, IF, IHC-P, WB
Clonality	Polyclonal
Formulation	TOPAZ1 Antibody is supplied in PBS containing 0.02% sodium azide.
Storage Instructions	TOPAZ1 antibody can be stored at 4°C for three months and -20°C, stable for up to one year.
Host	Rabbit
Uniprot ID	Q8N9V7

Technical Details

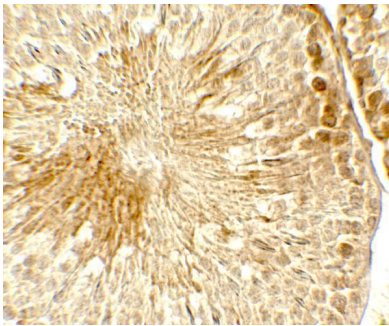
Immunogen	TOPAZ1 antibody was raised against a 19 amino acid peptide near the carboxy terminus of human TOPAZ1. The immunogen is located within amino acids 1330 - 1380 of TOPAZ1.
Predicted Reactive Species	Bovine, Sheep
Cross Reactivity	TOPAZ1 antibody is human, mouse and rat reactive. At least three isoforms of TOPAZ1 are known to exist.
Isotype	IgG
Form	Liquid
Concentration	1 mg/mL
Purification	TOPAZ1 antibody is affinity chromatography purified via peptide column.
Suggested Dilutions	TOPAZ1 antibody can be used for detection of TOPAZ1 by Western blot at 1 - 2 ug/ml. Antibody can also be used for Immunohistochemistry at 5 ug/mL. For Immunofluorescence start at 20 ug/mL.

Antibody validated: Western Blot in human samples; Immunohistochemistry in rat samples and Immunofluorescence in rat samples. All other applications and species not yet tested. Optimal dilutions for each application should be determined by the researcher.

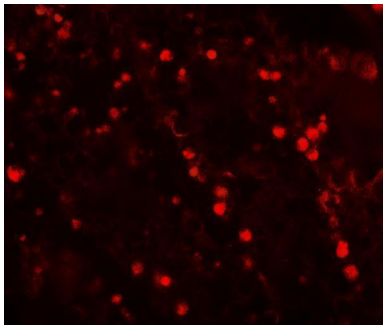
Anti-Protein TOPAZ1 TOPAZ1 Antibody (A17257) Images



Western blot analysis of TOPAZ1 in human testis tissue lysate with TOPAZ1 antibody at 1 ug/ml in (A) the absence and (B) the presence of blocking peptide.



Immunohistochemistry of TOPAZ1 in rat testis tissue with TOPAZ1 antibody at 5 ug/mL.



Immunofluorescence of TOPAZ1 in rat testis tissue with TOPAZ1 antibody at 20 ug/mL.

Submit a product review to [Biocompare.com](https://www.biocompare.com)

Submit a review of this product to [Biocompare.com](https://www.biocompare.com) to receive a \$20 Amazon.com giftcard! Your reviews help your fellow scientists make the right decisions. Thank you for your contribution.



Anti-Protein TOPAZ1 TOPAZ1 Antibody

For Research Use Only. Not for use in diagnostic procedures.