

## Anti-CCDC69 Antibody

Catalog Number: A17261

### About CCDC69

The coiled-coil domain is a common protein motif that is often involved in protein oligomerization and is found in proteins such as transcription factors and intermediate filaments. The CCDC47 gene maps to chromosome 5 at 5q33.1. Little is known about this protein.

### Overview

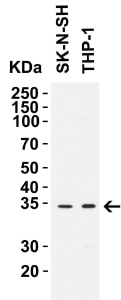
Product Name	Anti-CCDC69 Antibody
Reactive Species	Human, Mouse, Rat
Description	Boster Bio Anti-CCDC69 Antibody (Catalog # A17261). Tested in ELISA, WB, IHC-P, IF applications. This antibody reacts with Human, Mouse, Rat.
Application	ELISA, IF, IHC-P, WB
Clonality	Polyclonal
Formulation	CCDC69 Antibody is supplied in PBS containing 0.02% sodium azide.
Storage Instructions	CCDC69 antibody can be stored at 4°C for three months and -20°C, stable for up to one year. Avoid repeated freeze-thaw cycles. Antibodies should not be exposed to prolonged high temperatures.
Host	Chicken
Uniprot ID	A6NI79

### Technical Details

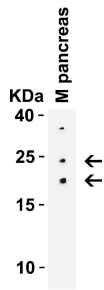
Immunogen	CCDC69 antibody was raised against a 16 amino acid synthetic peptide near the amino terminus of human CCDC69. The immunogen is located within amino acids 150 - 200 of CCDC69.
Predicted Reactive Species	Bovine
Isotype	IgY
Form	Liquid
Concentration	1 mg/mL
Purification	CCDC69 Antibody is affinity chromatography purified via peptide column.
Suggested Dilutions	WB: 1-2 ug/mL; IF: 5-20 ug/mL; IHC: 1-5 ug/mL. Antibody validated: Western Blot in human, mouse and ratsamples; Immunohistochemistry in human samples and Immunofluorescence in human samples. All other applications and species not yet tested.



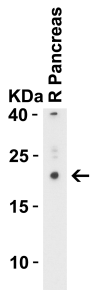
## Anti-CCDC69 Antibody (A17261) Images



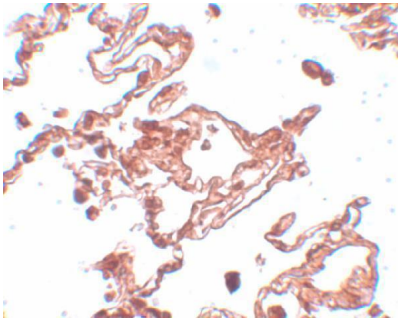
WB Validation in Human Cell Lines Loading: 15 ug of lysate. Antibodies: CCDC69 A17261, 1 ug/mL, 1 h incubation at RT in 8% NFDm/TBST. Secondary: Goat Anti-Rabbit IgG HRP conjugate at 1:10,000 dilution.



Western Blot Validation in Mouse Pancreas Tissue Lysate Loading: 15 ug of lysates per lane. Antibodies: CCDC69 A17261, 1 ug/mL, 1h incubation at RT in 8% NFDm/TBST. Secondary: Goat anti-rabbit IgG HRP conjugate at 1:10,000 dilution.

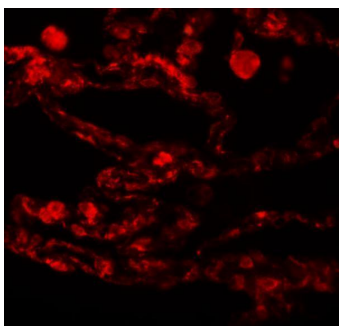


Western Blot Validation in Rat Pancreas Lysate Loading: 15 ug of lysates per lane. Antibodies: CCDC69 A17261, 1 ug/mL, 1h incubation at RT in 5% NFDm/TBST. Secondary: Goat anti-rabbit IgG HRP conjugate at 1:10,000 dilution.



Immunohistochemistry of CCDC69 in human lung tissue with CCDC69 antibody at 5 ug/mL.

Immunofluorescence of CCDC69 in human lung tissue with CCDC69 antibody at 20 ug/mL.



## Submit a product review to [Biocompare.com](https://www.biocompare.com)

Submit a review of this product to [Biocompare.com](https://www.biocompare.com) to receive a \$20 Amazon.com giftcard! Your reviews help your fellow scientists make the right decisions. Thank you for your contribution.



Anti-CCDC69 Antibody

For Research Use Only. Not for use in diagnostic procedures.