

Anti-MettL7B Antibody

Catalog Number: A17310

About METTL7B

MettL7B belongs to the methyltransferase superfamily. It is a probable methyltransferase. Methyltransferase is a type of transferase enzyme which transfers a methyl group from a donor to an acceptor. Often methylation occurs on nucleic bases in DNA or amino acids in protein structures. DNA methylation is often utilized to silence and regulate genes without changing the original DNA sequence. DNA methylation may be necessary for normal growth from embryonic stages in mammals. When mutant embryonic stem cells lacking the murine DNA methyltransferase gene were introduced to a germline of mice they caused a recessive lethal phenotype. Methylation may also be linked to cancer development as methylation of tumor suppressor genes promotes tumorigenesis and metastasis.

Overview

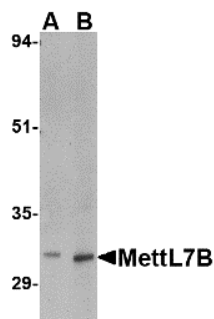
Product Name	Anti-MettL7B Antibody
Reactive Species	Human, Mouse, Rat
Description	Boster Bio Anti-MettL7B Antibody (Catalog # A17310). Tested in ELISA, WB, IHC-P applications. This antibody reacts with Human, Mouse, Rat.
Application	ELISA, IHC-P, WB
Clonality	Polyclonal
Formulation	MettL7B Antibody is supplied in PBS containing 0.02% sodium azide.
Storage Instructions	MettL7B antibody can be stored at 4°C for three months and -20°C, stable for up to one year. Avoid repeated freeze-thaw cycles. Antibodies should not be exposed to prolonged high temperatures.
Host	Rabbit
Uniprot ID	Q6UX53

Technical Details

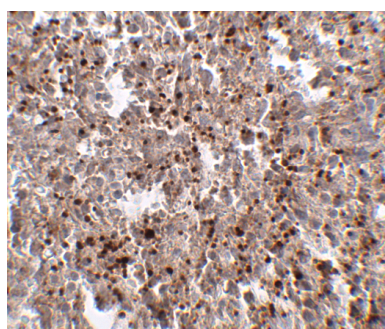
Immunogen	MettL7B antibody was raised against a 16 amino acid synthetic peptide near the carboxy terminus of human MettL7B. The immunogen is located within the last 50 amino acids of MettL7B.
Predicted Reactive Species	Bovine, Sheep
Cross Reactivity	This MettL7B antibody is predicted to not cross-react with MettL7A.
Isotype	IgG
Form	Liquid
Concentration	1 mg/mL

Purification	MettL7B Antibody is affinity chromatography purified via peptide column.
Suggested Dilutions	MettL7B antibody can be used for detection of Mettl7B by Western blot at 2 - 4 ug/mL. Antibody can also be used for immunohistochemistry starting at 2.5 ug/mL. Antibody validated: Western Blot in rat samples and Immunohistochemistry in human samples. All other applications and species not yet tested. Optimal dilutions for each application should be determined by the researcher.

Anti-MettL7B Antibody (A17310) Images



Western blot analysis of MettL7B in rat spleen tissue lysate with MettL7B antibody at (A) 2 and (B) 4 ug/mL.



Immunohistochemistry of Mett7LB in human spleen tissue with MettL7B antibody at 2.5 ug/mL.

Submit a product review to [Biocompare.com](https://www.biocompare.com)

Submit a review of this product to [Biocompare.com](https://www.biocompare.com) to receive a \$20 Amazon.com giftcard! Your reviews help your fellow scientists make the right decisions. Thank you for your contribution.



Anti-MettL7B Antibody

For Research Use Only. Not for use in diagnostic procedures.