

## Anti-RGS21 Antibody

Catalog Number: A17313

### About RGS21

Regulator of G-protein signaling (RGS) proteins contain an 120 amino acid conserved domain, termed the RGS domain, that acts as a GTPase-activating protein that acts to reduce the signal transmitted by the receptor-activated G-alpha subunit. RGS21 is a recently identified member of this family that has been reported to be selectively expressed in subpopulations of taste bud cells and co-expressed with bitter and sweet transduction components such as alpha-gusticin, phospholipase Cbeta2, T1R2/T1R3 sweet taste receptors and T2R bitter taste receptors. Other reports indicate that RGS21 is more widely expressed. Binding assays demonstrate that RGS21 binds alpha-gusticin in a conformation-dependent manner and may do the same with T1R receptors, suggesting that RGS21 may play a role in sweet and bitter taste transduction processes.

### Overview

Product Name	Anti-RGS21 Antibody
Reactive Species	Human
Description	Boster Bio Anti-RGS21 Antibody (Catalog # A17313). Tested in ELISA, WB, IHC-P, IF applications. This antibody reacts with Human.
Application	ELISA, IF, IHC-P, WB
Clonality	Polyclonal
Formulation	RGS21 Antibody is supplied in PBS containing 0.02% sodium azide.
Storage Instructions	RGS21 antibody can be stored at 4°C for three months and -20°C, stable for up to one year. Avoid repeated freeze-thaw cycles. Antibodies should not be exposed to prolonged high temperatures.
Host	Rabbit
Uniprot ID	Q2M5E4

### Technical Details

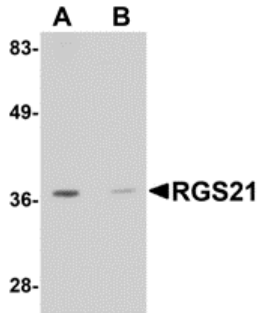
Immunogen	RGS21 antibody was raised against a 16 amino acid synthetic peptide near the center of human RGS21. The immunogen is located within amino acids 40 - 90 of RGS21.
Predicted Reactive Species	Bovine, Sheep
Isotype	IgG
Form	Liquid
Concentration	1 mg/mL
Purification	RGS21 Antibody is affinity chromatography purified via peptide column.

**Suggested Dilutions**

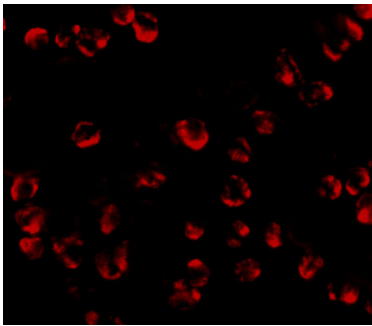
RGS21 antibody can be used for detection of RGS21 by Western blot at 0.5 ug/mL. Antibody can also be used for immunocytochemistry starting at 2.5 ug/mL. For immunofluorescence start at 20 ug/mL.

Antibody validated: Western Blot in human samples; Immunocytochemistry in human samples and Immunofluorescence in human samples. All other applications and species not yet tested. Optimal dilutions for each application should be determined by the researcher.

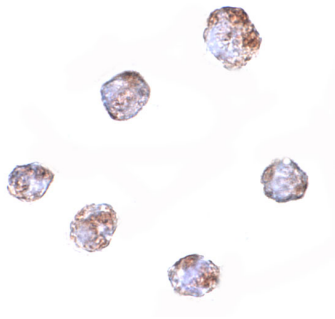
## Anti-RGS21 Antibody (A17313) Images



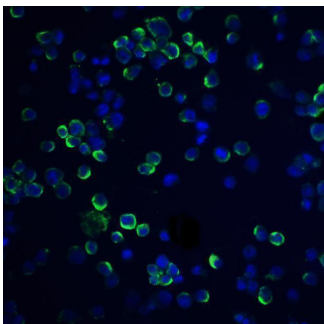
Western blot analysis of RGS21 in HepG2 cell lysate with RGS21 antibody at 0.5 ug/mL in (A) the absence and (B) the presence of blocking peptide.



Immunofluorescence of RGS21 in HepG2 cells with RGS21 antibody at 20 ug/mL.



Immunocytochemistry of RGS21 in HepG2 cells with RGS21 antibody at 2.5 ug/mL.



Immunofluorescence of RGS21 in HepG2 cells with RGS21 antibody at 20 ug/mL. Green: RGS21 Antibody (A17313)  
Blue: DAPI staining

Submit a product review to [Biocompare.com](https://www.biocompare.com)

Submit a review of this product to [Biocompare.com](https://www.biocompare.com) to receive a \$20 Amazon.com giftcard! Your reviews help your fellow scientists make the right decisions. Thank you for your contribution.



Anti-RGS21 Antibody

For Research Use Only. Not for use in diagnostic procedures.