

## Anti-LYR motif-containing protein 2 LYRM2 Antibody

Catalog Number: A17457

### About LYRM2

The Lyr motif found in the LYR-motif containing protein family is similar to that found in the *sacchomyces cerevisiae* protein ISD11, an iron-sulfur protein in the mitochondria that is thought to play a role in iron homeostasis. No known function has been assigned to LYRM2, although LYRM1 is thought to be involved in preadipocyte progression and LYRM3 has been suggested to be a candidate gene for the branchio-oto-renal (BOR) syndrome.

### Overview

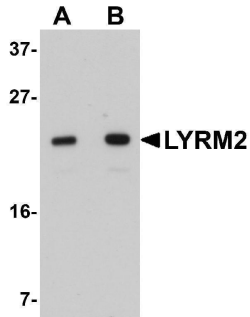
Product Name	Anti-LYR motif-containing protein 2 LYRM2 Antibody
Reactive Species	Human, Mouse, Rat
Description	Boster Bio Anti-LYR motif-containing protein 2 LYRM2 Antibody (Catalog # A17457). Tested in ELISA, WB, ICC, IF applications. This antibody reacts with Human, Mouse, Rat.
Application	ELISA, IF, ICC, WB
Clonality	Polyclonal
Formulation	LYRM2 Antibody is supplied in PBS containing 0.02% sodium azide.
Storage Instructions	LYRM2 antibody can be stored at 4°C for three months and -20°C, stable for up to one year. Avoid repeated freeze-thaw cycles. Antibodies should not be exposed to prolonged high temperatures.
Host	Rabbit
Uniprot ID	Q9NU23

### Technical Details

Immunogen	LYRM2 antibody was raised against a 16 amino acid synthetic peptide near the carboxy terminus of human LYRM2. The immunogen is located within the last 50 amino acids of LYRM2.
Predicted Reactive Species	Bovine
Isotype	IgG
Form	Liquid
Concentration	1 mg/mL
Purification	LYRM2 Antibody is affinity chromatography purified via peptide column.
Suggested Dilutions	LYRM2 antibody can be used for detection of LYRM2 by Western blot at 1 - 2 ug/mL. Antibody can also be used for immunocytochemistry starting at 20 ug/mL. For immunofluorescence start at 20 ug/mL.

Antibody validated: Western Blot in human samples; Immunocytochemistry in human samples and Immunofluorescence in human samples. All other applications and species not yet tested. Optimal dilutions for each application should be determined by the researcher.

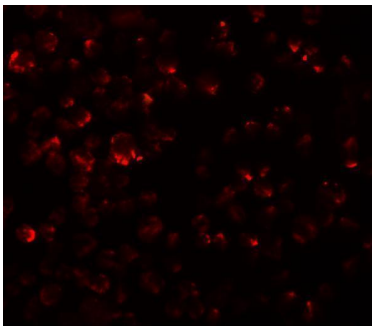
## Anti-LYR motif-containing protein 2 LYRM2 Antibody (A17457) Images



Western blot analysis of LYRM2 in A549 cell lysate with LYRM2 antibody at (A) 1 and (B) 2 ug/mL.



Immunocytochemistry of LYRM2 in A549 cells with LYRM2 antibody at 20 ug/mL.



Immunofluorescence of LYRM2 in A549 cells with LYRM2 antibody at 20 ug/mL.

### Submit a product review to Biocompare.com

Submit a review of this product to Biocompare.com to receive a \$20 Amazon.com giftcard! Your reviews help your fellow scientists make the right decisions. Thank you for your contribution.



Anti-LYR motif-containing protein 2 LYRM2 Antibody  
For Research Use Only. Not for use in diagnostic procedures.