

## Anti-Olfactory receptor 6C2 OR6C2 Antibody

Catalog Number: A17575

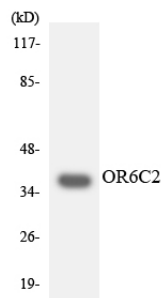
### Overview

Product Name	Anti-Olfactory receptor 6C2 OR6C2 Antibody
Reactive Species	Human, Mouse, Rat
Description	Boster Bio Anti-Olfactory receptor 6C2 OR6C2 Antibody (Catalog# A17575). Tested in WB, ICC, IF, ELISA applications. This antibody reacts with Human, Mouse, Rat.
Application	ELISA, IF, ICC, WB
Clonality	Polyclonal
Formulation	PBS containing 50% glycerol, 0.5% stabilizing protein and 0.02% sodium azide. This antibody is supplied in a stabilized formulation. Compatibility with conjugation reactions depends on the chemistry of the conjugation method used. For conjugation methods that are not compatible with the stabilizing components present in this formulation, a carrier-free antibody format is required.
Storage Instructions	Store at -20°C for one year. For short-term storage and frequent use, store at 4°C for up to one month. Avoid repeated freeze-thaw cycles.
Host	Rabbit
Uniprot ID	Q9NZP2

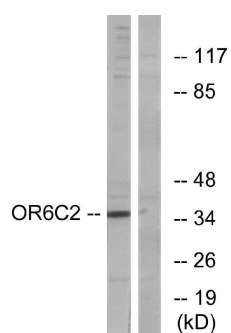
### Technical Details

Immunogen	A peptide derived from human OR6C2. Immunogen sequence location: 231 - 280
Isotype	Rabbit IgG
Form	Liquid
Concentration	0.5-1mg/ml, actual concentration vary by lot. Use suggested dilution ratio to decide dilution procedure.
Purification	The antibody was purified from rabbit antiserum by affinity-chromatography using immunogen.
Suggested Dilutions	WB 1:500 - 1:2000. ICC/IF 1:200 - 1:1000. ELISA: 1:20000. Not yet tested in other applications.

## Anti-Olfactory receptor 6C2 OR6C2 Antibody (A17575) Images



Western blot analysis of the lysates from COLO205 cells using OR6C2 antibody.



Western blot analysis of lysates from HT-29 cells, using OR6C2 Antibody. The lane on the right is blocked with the synthesized peptide.

### Submit a product review to [Biocompare.com](https://www.biocompare.com)

Submit a review of this product to [Biocompare.com](https://www.biocompare.com) to receive a \$20 Amazon.com giftcard! Your reviews help your fellow scientists make the right decisions. Thank you for your contribution.



Anti-Olfactory receptor 6C2 OR6C2 Antibody

For Research Use Only. Not for use in diagnostic procedures.