

## Anti-MFSD1 Antibody

Catalog Number: A17695

### About MFSD1

Multidrug transporters, such as MFSD1, are membrane proteins that expel a wide spectrum of cytotoxic compounds from the cell and render cells resistant to multiple drugs. The Major Facilitator Superfamily (MFS) is a large and diverse group of secondary transporters that include uniporters, symporters, and antiporters. Members of this family are found in all living organisms and are highly represented in bacteria. MFS members are capable of transporting various substrates such as sugars, polyols, drugs, neurotransmitters, amino acids, peptides, and inorganic anions, although most members are substrate-specific. MFS have provided important insight into the mechanism underlying multidrug transport. MFSD1 is still poorly understood.

### Overview

Product Name	Anti-MFSD1 Antibody
Reactive Species	Human, Mouse, Rat
Description	Boster Bio Anti-MFSD1 Antibody (Catalog # A17695). Tested in ELISA, WB, IHC-P applications. This antibody reacts with Human, Mouse, Rat.
Application	ELISA, IHC-P, WB
Clonality	Polyclonal
Formulation	MFSD1 Antibody is supplied in PBS containing 0.02% sodium azide.
Storage Instructions	MFSD1 antibody can be stored at 4°C for three months and -20°C, stable for up to one year. Avoid repeated freeze-thaw cycles. Antibodies should not be exposed to prolonged high temperatures.
Host	Rabbit
Uniprot ID	Q9H3U5

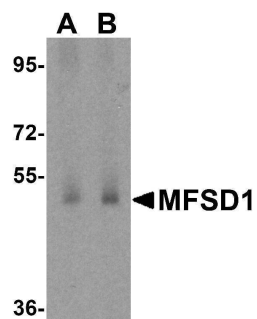
### Technical Details

Immunogen	MFSD1 antibody was raised against an 18 amino acid synthetic peptide near the center of human MFSD1. The immunogen is located within amino acids 220 - 270 of MFSD1.
Predicted Reactive Species	Bovine, Chicken
Isotype	IgG
Form	Liquid
Concentration	1 mg/mL
Purification	MFSD1 Antibody is affinity chromatography purified via peptide column.

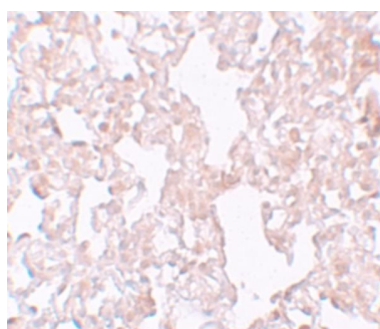
Suggested Dilutions

MFSD1 antibody can be used for detection of MFSD1 by Western blot at 1 - 2 ug/mL. Antibody can also be used for immunohistochemistry starting at 10 ug/mL.  
Antibody validated: Western Blot in human samples and Immunohistochemistry in rat samples. All other applications and species not yet tested. Optimal dilutions for each application should be determined by the researcher.

## Anti-MFSD1 Antibody (A17695) Images



Western blot analysis of MFSD1 in human testis tissue lysate with MFSD1 antibody at (A) 1 and (B) 2 ug/mL.



Immunohistochemistry of MFSD1 in rat lung tissue with MFSD1 antibody at 10 ug/mL.

### Submit a product review to [Biocompare.com](https://www.biocompare.com)

Submit a review of this product to [Biocompare.com](https://www.biocompare.com) to receive a \$20 Amazon.com giftcard! Your reviews help your fellow scientists make the right decisions. Thank you for your contribution.



Anti-MFSD1 Antibody

For Research Use Only. Not for use in diagnostic procedures.