

## Anti-MFSD2B Antibody

Catalog Number: A17784

### About MFSD2B

Multidrug transporters, such as MFSD2B, are membrane proteins that expel a wide spectrum of cytotoxic compounds from the cell and render cells resistant to multiple drugs. Major Facilitator Superfamily (MFS) members are capable of transporting various substrates such as sugars, polyols, drugs, neurotransmitters, amino acids, peptides, and inorganic anions, although most members are substrate-specific. MFSD2B is closely related to MFSD2A, which is expressed in many tissues and is highly induced in liver and brown adipose tissue (BAT) during fasting, playing a major role in the induction of MFSD2A expression during adaptive thermogenesis. Unlike MFSD2A, MFSD2B is expressed in few tissues and at relatively low levels, and is not induced during fasting, suggesting that MFSD2B may play other roles.

### Overview

Product Name	Anti-MFSD2B Antibody
Reactive Species	Human, Rat
Description	Boster Bio Anti-MFSD2B Antibody (Catalog # A17784). Tested in ELISA, WB applications. This antibody reacts with Human, Rat.
Application	ELISA, WB
Clonality	Polyclonal
Formulation	MFSD2B Antibody is supplied in PBS containing 0.02% sodium azide.
Storage Instructions	Antibody can be stored at 4°C up to one year. Antibodies should not be exposed to prolonged high temperatures.
Host	Rabbit
Uniprot ID	A6NFX1

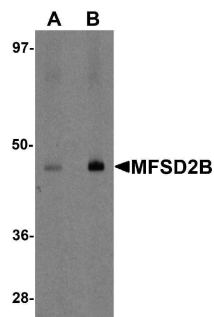
### Technical Details

Immunogen	MFSD2B antibody was raised against a 15 amino acid synthetic peptide near the center of human MFSD2B. The immunogen is located within amino acids 240 - 290 of MFSD2B.
Predicted Reactive Species	Mouse
Isotype	IgG
Form	Liquid
Concentration	1 mg/mL
Purification	MFSD2B Antibody is affinity chromatography purified via peptide column.

Suggested Dilutions

MFSD2B antibody can be used for detection of MFSD2B by Western blot at 1 - 2 ug/mL.  
Antibody validated: Western Blot in rat samples. All other applications and species not yet tested.  
Optimal dilutions for each application should be determined by the researcher.

## Anti-MFSD2B Antibody (A17784) Images



Western blot analysis of MFSD2B in rat lung tissue lysate with MFSD2B antibody at (A) 1 and (B) 2 ug/mL.

### Submit a product review to Biocompare.com

Submit a review of this product to Biocompare.com to receive a \$20 Amazon.com giftcard! Your reviews help your fellow scientists make the right decisions. Thank you for your contribution.



### Anti-MFSD2B Antibody

For Research Use Only. Not for use in diagnostic procedures.