

Anti-KRBA2 Antibody (Center)

Catalog Number: A17799

About KRBA2

Odorant receptor (Potential).

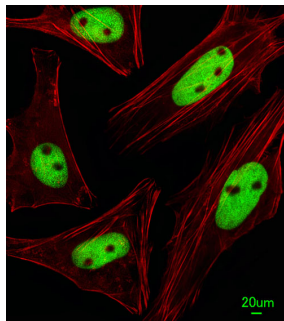
Overview

Product Name	Anti-KRBA2 Antibody (Center)
Reactive Species	Human
Description	Boster Bio Anti-KRBA2 Antibody (Center) (Catalog # A17799). Tested in IF, WB application(s). This antibody reacts with Human.
Application	IF, WB
Clonality	Polyclonal
Formulation	Purified polyclonal antibody supplied in PBS with 0.09% (W/V) sodium azide.
Storage Instructions	Maintain refrigerated at 2-8°C for up to 2 weeks. For long-term storage, store at -20°C in small aliquots to prevent freeze-thaw cycles.
Host	Rabbit
Uniprot ID	Q6ZNG9

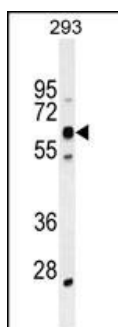
Technical Details

Immunogen	This KRBA2 antibody is generated from rabbits immunized with a KLH conjugated synthetic peptide between 157-186 amino acids from the Central region of human KRBA2.
Predicted Reactive Species	Bovine
Isotype	Rabbit IgG
Purification	This antibody is purified through a protein A column, followed by peptide affinity purification.
Suggested Dilutions	IF: 1:25 WB: 1:1000

Anti-KRBA2 Antibody (Center) (A17799) Images



Immunofluorescent analysis of HeLa cells, using KRBA2 Antibody (Center) . A17799 was diluted at 1:25 dilution. Alexa Fluor 488-conjugated goat anti-rabbit IgG at 1:400 dilution was used as the secondary antibody (green). Cytoplasmic actin was counterstained with Dylight Fluor® 554 (red) conjugated Phalloidin (red).



KRBA2 Antibody (Center) (Cat. #A17799) western blot analysis in 293 cell line lysates (35ug/lane). This demonstrates the KCat. #A2 antibody detected the KCat. #A2 protein (arrow).

Submit a product review to Biocompare.com

Submit a review of this product to Biocompare.com to receive a \$20 Amazon.com giftcard! Your reviews help your fellow scientists make the right decisions. Thank you for your contribution.



Anti-KRBA2 Antibody (Center)

For Research Use Only. Not for use in diagnostic procedures.