

## Anti-Protein shisa-3 homolog SHISA3 Antibody

Catalog Number: A17840

### About SHISA3

SHISA3 plays an essential role in the maturation of presomitic mesoderm cells by individual attenuation of both FGF and WNT signaling. The Shisa family of single-transmembrane proteins is characterized by an N-terminal cysteine-rich domain and a proline-rich C-terminal region. Its founding member, Xenopus Shisa, promotes head development by antagonizing Wnt and FGF signaling. Shisa physically interacted with immature forms of the Wnt receptor Frizzled and the FGF receptor within the ER and inhibited their posttranslational maturation and trafficking to the cell surface. Loss of Shisa function sensitized the neuroectoderm to Wnt signaling and suppressed head formation during gastrulation.

### Overview

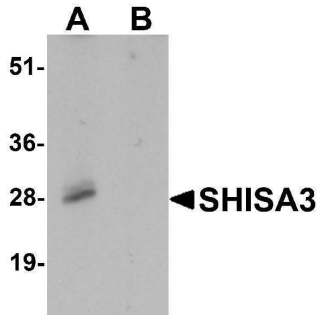
Product Name	Anti-Protein shisa-3 homolog SHISA3 Antibody
Reactive Species	Human, Mouse, Rat
Description	Boster Bio Anti-Protein shisa-3 homolog SHISA3 Antibody (Catalog # A17840). Tested in ELISA, WB, IHC-P, IF applications. This antibody reacts with Human, Mouse, Rat.
Application	ELISA, IF, IHC-P, WB
Clonality	Polyclonal
Formulation	SHISA3 Antibody is supplied in PBS containing 0.02% sodium azide.
Storage Instructions	SHISA3 antibody can be stored at 4°C for three months and -20°C, stable for up to one year.
Host	Rabbit
Uniprot ID	A0PJX4

### Technical Details

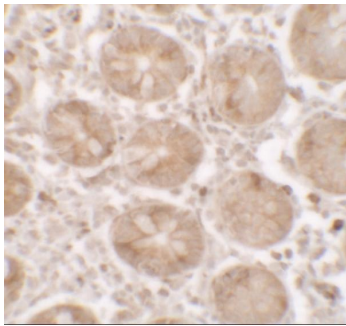
Immunogen	SHISA3 antibody was raised against a 15 amino acid peptide near the center of human SHISA3. The immunogen is located within amino acids 120 - 170 of SHISA3.
Predicted Reactive Species	Mouse
Cross Reactivity	SHISA3 antibody is predicted to not cross-react with other SHISA protein family members.
Isotype	IgG
Form	Liquid
Concentration	1 mg/mL
Purification	SHISA3 Antibody is affinity chromatography purified via peptide column.
Suggested Dilutions	SHISA3 Antibody can be used for detection of SHISA3 by Western blot at 1 ug/mL.

Antibody validated: Western Blot in human samples; Immunohistochemistry in human samples and Immunofluorescence in human samples. All other applications and species not yet tested. Optimal dilutions for each application should be determined by the researcher.

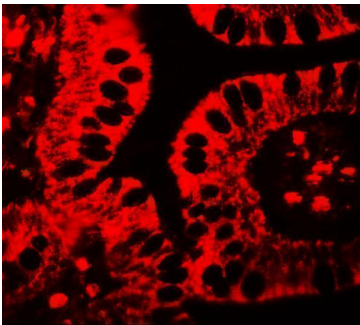
## Anti-Protein shisa-3 homolog SHISA3 Antibody (A17840) Images



Western blot analysis of SHISA3 in human small intestine Tissue lysate with SHISA3 antibody at 1 ug/mL in (A) the absence and (B) the presence of blocking peptide.



Immunohistochemistry of SHISA3 in human small intestine tissue with SHISA3 antibody at 2.5 ug/ml.



Immunofluorescence of SHISA3 in human small intestine tissue with SHISA3 antibody at 20 ug/ml.

**Submit a product review to [Biocompare.com](https://www.biocompare.com)**

Submit a review of this product to [Biocompare.com](https://www.biocompare.com) to receive a \$20 Amazon.com giftcard! Your reviews help your fellow scientists make the right decisions. Thank you for your contribution.



Anti-Protein shisa-3 homolog SHISA3 Antibody

For Research Use Only. Not for use in diagnostic procedures.