

Anti-CUEDC1 Antibody

Catalog Number: A17855

About CUEDC1

The CUE (coupling of ubiquitin conjugation to endoplasmic reticulum degradation) domain is an evolutionarily conserved, ~40 amino acid monoubiquitin-binding domain that mediates intramolecular monoubiquitylation. CUE domains are present in eukaryotic proteins that are involved in ubiquitination and protein trafficking pathways and may be required for ubiquitination of the proteins in which they are found. CUEDC1 (CUE domain-containing protein 1) is a 386 amino acid protein that contains one CUE domain, suggesting a possible role in protein trafficking and degradation pathways. Two isoforms of CUEDC1 exist due to alternative splicing events. Defects in the gene encoding CUEDC1 may be associated with early stage cervical cancer, implicating CUEDC1 as a potential tumor marker.

Overview

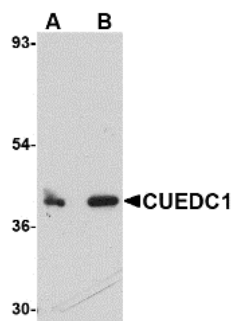
Product Name	Anti-CUEDC1 Antibody
Reactive Species	Human, Mouse, Rat
Description	Boster Bio Anti-CUEDC1 Antibody (Catalog # A17855). Tested in ELISA, WB, IHC-P, IF applications. This antibody reacts with Human, Mouse, Rat.
Application	ELISA, IF, IHC-P, WB
Clonality	Polyclonal
Formulation	CUEDC1 Antibody is supplied in PBS containing 0.02% sodium azide.
Storage Instructions	CUEDC1 antibody can be stored at 4°C for three months and -20°C, stable for up to one year. Avoid repeated freeze-thaw cycles. Antibodies should not be exposed to prolonged high temperatures.
Host	Rabbit
Uniprot ID	Q9NWM3

Technical Details

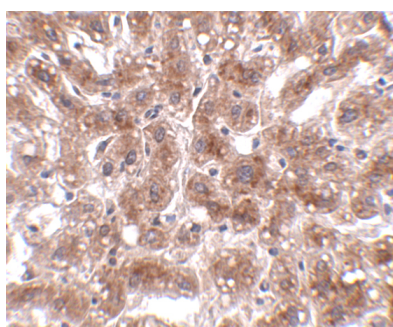
Immunogen	CUEDC1 antibody was raised against a 16 amino acid synthetic peptide near the carboxy terminus of human CUEDC1. The immunogen is located within amino acids 310 - 360 of CUEDC1.
Predicted Reactive Species	Bovine, Chicken, Pig
Cross Reactivity	CUEDC1 antibody will not cross-react with CUEDC2.
Isotype	IgG
Form	Liquid
Concentration	1 mg/mL

Purification	CUEDC1 Antibody is affinity chromatography purified via peptide column.
Suggested Dilutions	CUEDC1 antibody can be used for detection of CUEDC1 by Western blot at 0.5 - 1 ug/mL. Antibody can also be used for immunohistochemistry starting at 2 ug/mL. For immunofluorescence start at 20 ug/mL. Antibody validated: Western Blot in rat samples; Immunohistochemistry in human samples and Immunofluorescence in human samples. All other applications and species not yet tested. Optimal dilutions for each application should be determined by the researcher.

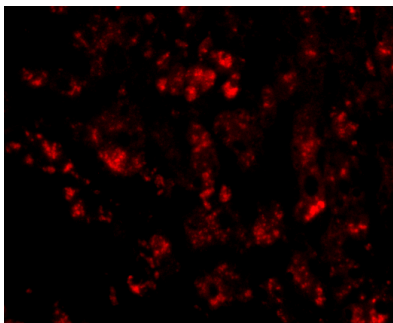
Anti-CUEDC1 Antibody (A17855) Images



Western blot analysis of CUEDC1 in rat liver tissue lysate with CUEDC1 antibody at (A) 0.5 and (B) 1 ug/mL.



Immunohistochemistry of CUEDC1 in human liver tissue with CUEDC1 antibody at 2 ug/mL.



Immunofluorescence of CUEDC1 in human liver tissue with CUEDC1 antibody at 20 ug/mL.

Submit a product review to [Biocompare.com](https://www.biocompare.com)

Submit a review of this product to [Biocompare.com](https://www.biocompare.com) to receive a \$20 Amazon.com giftcard! Your reviews help your fellow scientists make the right decisions. Thank you for your contribution.



Anti-CUEDC1 Antibody

For Research Use Only. Not for use in diagnostic procedures.