

Anti-PIERCE1 C9orf116 Antibody

Catalog Number: A17906

About C9ORF116

PIERCE1, also known as C9orf116, is an important p53 target gene contributing to normal DNA damage response and may play crucial roles in maintaining genomic integrity against genotoxic stresses, including UVC irradiation. PIERCE1 exists as two alternatively spliced isoforms and is predominantly expressed in human small cell lung cancer. PIERCE1 knockdown induces down-regulation of proapoptotic genes including Ei24, Apaf1 and PTEN, suggesting that PIERCE1 is a proapoptotic gene. It is helpful for in-depth understanding of p53 pathways and the design of new cancer therapies.

Overview

Product Name	Anti-PIERCE1 C9orf116 Antibody
Reactive Species	Human, Mouse
Description	Boster Bio Anti-PIERCE1 C9orf116 Antibody (Catalog # A17906). Tested in ELISA, WB, ICC applications. This antibody reacts with Human, Mouse.
Application	ELISA, ICC, WB
Clonality	Polyclonal
Formulation	PIERCE1 Antibody is supplied in PBS containing 0.02% sodium azide.
Storage Instructions	PIERCE1 antibody can be stored at 4°C for three months and -20°C, stable for up to one year. Avoid repeated freeze-thaw cycles. Antibodies should not be exposed to prolonged high temperatures.
Host	Rabbit
Uniprot ID	Q5BN46

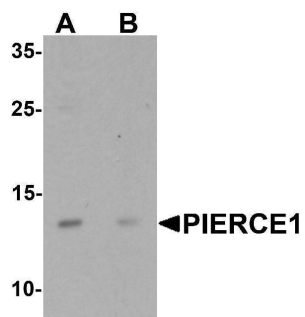
Technical Details

Immunogen	PIERCE1 antibody was raised against a 16 amino acid synthetic peptide near the amino terminus of human PIERCE1. The immunogen is located within the first 50 amino acids of PIERCE1.
Predicted Reactive Species	Bovine, Chicken, Pig
Cross Reactivity	PIERCE1 antibody is predicted to not cross-react with other UPF0691 family members.
Isotype	IgG
Form	Liquid
Concentration	1 mg/mL
Purification	PIERCE1 Antibody is affinity chromatography purified via peptide column.

Suggested Dilutions

PIERCE1 antibody can be used for detection of PIERCE1 by Western blot at 1 ug/mL. Antibody can also be used for immunocytochemistry starting at 2.5 ug/mL.
Antibody validated: Western Blot in mouse samples and Immunocytochemistry in mouse samples. All other applications and species not yet tested. Optimal dilutions for each application should be determined by the researcher.

Anti-PIERCE1 C9orf116 Antibody (A17906) Images



Western blot analysis of PIERCE1 in A20 cell lysate with PIERCE1 antibody at 1 ug/mL in (A) the absence and (B) the presence of blocking peptide.



Immunocytochemistry of PIERCE1 in A20 cells with PIERCE1 antibody at 2.5 ug/mL.

Submit a product review to Biocompare.com

Submit a review of this product to Biocompare.com to receive a \$20 Amazon.com giftcard! Your reviews help your fellow scientists make the right decisions. Thank you for your contribution.



Anti-PIERCE1 C9orf116 Antibody

For Research Use Only. Not for use in diagnostic procedures.