

## Anti-TCTEX1D1 Antibody

Catalog Number: A18042

### About TCTEX1D1

Dyneins are multi-subunit, high molecular weight ATPases that interact with microtubules to generate force by converting the chemical energy of ATP into the mechanical energy of movement. Cytoplasmic or axonemal Dynein is an approximately 12 subunit complex of two heavy chains, two intermediate chains to anchor Dynein to its cargo, four smaller intermediate chains and several light chains. It performs functions necessary for cell survival such as organelle transport and centrosome assembly. TCTEX1 is a cytoplasmic dynein light chain found in a complex with Na<sup>+</sup> CP type X (SCN10A). TCTEX1D1, also called TCTEX1 domain containing 1, belongs to the dynein light chain TCTEX-type family. Its function is still under investigation.

### Overview

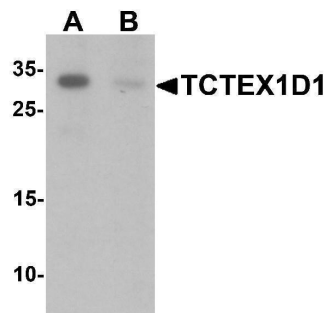
Product Name	Anti-TCTEX1D1 Antibody
Reactive Species	Human
Description	Boster Bio Anti-TCTEX1D1 Antibody (Catalog # A18042). Tested in ELISA, WB, IF applications. This antibody reacts with Human.
Application	ELISA, IF, WB
Clonality	Polyclonal
Formulation	TCTEX1D1 Antibody is supplied in PBS containing 0.02% sodium azide.
Storage Instructions	TCTEX1D1 antibody can be stored at 4°C for three months and -20°C, stable for up to one year. Avoid repeated freeze-thaw cycles. Antibodies should not be exposed to prolonged high temperatures.
Host	Rabbit
Uniprot ID	Q8N7M0

### Technical Details

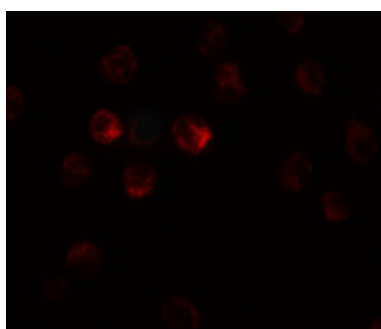
Immunogen	TCTEX1D1 antibody was raised against a 16 amino acid synthetic peptide near the amino terminus of human. The immunogen is located within amino acids 30 - 80 of TCTEX1D1.
Predicted Reactive Species	Mouse
Cross Reactivity	At least three isoforms are known to exist; this antibody will detect the two largest isoforms. TCTEX1D1 is predicted to not cross-react with other members of the TCTEX-type family.
Isotype	IgG
Form	Liquid

Concentration	1 mg/mL
Purification	TCTEX1D1 Antibody is affinity chromatography purified via peptide column.
Suggested Dilutions	TCTEX1D1 antibody can be used for detection of TCTEX1D1 by Western blot at 1 ug/mL. For immunofluorescence start at 20 ug/mL. Antibody validated: Western Blot in human samples and Immunofluorescence in human samples. All other applications and species not yet tested. Optimal dilutions for each application should be determined by the researcher.

## Anti-TCTEX1D1 Antibody (A18042) Images



Western blot analysis of TCTEX1D1 in K562 cell lysate with TCTEX1D1 antibody at 1 ug/mL in (A) the absence and (B) the presence of blocking peptide.



Immunofluorescence of TCTEX1D1 in K562 cells with TCTEX1D1 antibody at 20 ug/mL.

### Submit a product review to [Biocompare.com](https://www.biocompare.com)

Submit a review of this product to [Biocompare.com](https://www.biocompare.com) to receive a \$20 Amazon.com giftcard! Your reviews help your fellow scientists make the right decisions. Thank you for your contribution.



Anti-TCTEX1D1 Antibody

For Research Use Only. Not for use in diagnostic procedures.