

Anti-SPATA1 Antibody

Catalog Number: A18198

About SPATA1

SPATA1, a novel cell-surface protein, is involved in shaping the sperm head during spermatogenesis. SPATA1 is localized at chromosome 1q21. At least three isoforms of SPATA1 are known to exist. The longest is preferentially expressed in hematopoietic tissues. Its extracellular domain contains a single immunoglobulin-like domain, and its intracellular segment has two immunoreceptor tyrosine-based inhibition motifs (ITIMs). It is thought to have an important role in hematopoietic cell signaling. The mid-sized isoform contains a short intracellular part without ITIMs, while the shortest isoform lacks the transmembrane segment and represents a potential soluble protein (2, 3).

Overview

Product Name	Anti-SPATA1 Antibody
Reactive Species	Human, Mouse
Description	Boster Bio Anti-SPATA1 Antibody (Catalog # A18198). Tested in ELISA, WB, IHC-P, IF applications. This antibody reacts with Human, Mouse.
Application	ELISA, IF, IHC-P, WB
Clonality	Polyclonal
Formulation	SPATA1 Antibody is supplied in PBS containing 0.02% sodium azide.
Storage Instructions	SPATA1 antibody can be stored at 4°C for three months and -20°C, stable for up to one year. Avoid repeated freeze-thaw cycles. Antibodies should not be exposed to prolonged high temperatures.
Host	Rabbit
Uniprot ID	Q5VX52

Technical Details

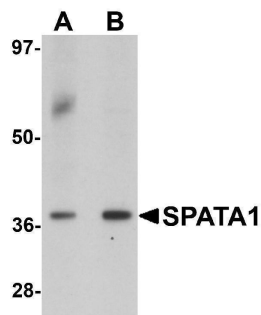
Immunogen	SPATA1 antibody was raised against an 18 amino acid synthetic peptide near the carboxy terminus of human SPATA1. The immunogen is located within amino acids 300 - 350 of SPATA1.
Predicted Reactive Species	Rat
Cross Reactivity	At least two isoforms of SPATA1 are known to exist; this antibody will detect only the longest isoforms. SPATA1 antibody is predicted to not cross-react with other SPATA family members.
Isotype	IgG
Form	Liquid
Concentration	1 mg/mL
Purification	SPATA1 Antibody is affinity chromatography purified via peptide column.

Suggested Dilutions

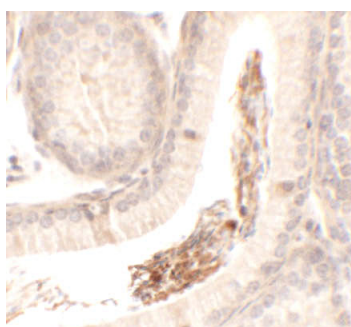
SPATA1 antibody can be used for detection of SPATA1 by Western blot at 1 - 2 ug/mL. Antibody can also be used for immunohistochemistry starting at 2.5 ug/mL. For immunofluorescence start at 20 ug/mL.

Antibody validated: Western Blot in mouse samples; Immunohistochemistry in mouse samples and Immunofluorescence in mouse samples. All other applications and species not yet tested. Optimal dilutions for each application should be determined by the researcher.

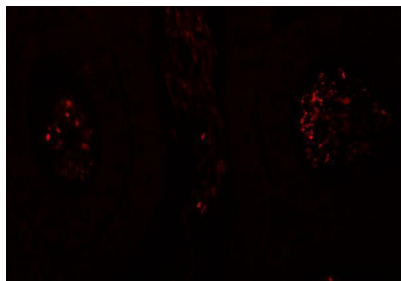
Anti-SPATA1 Antibody (A18198) Images



Western blot analysis of SPATA1 in A20 cell lysate with SPATA1 antibody at (A) 1 and (B) 2 ug/mL.



Immunohistochemistry of SPATA1 in mouse testis tissue with SPATA1 antibody at 2.5 ug/mL.



Immunofluorescence of SPATA1 in mouse testis tissue with SPATA1 antibody at 20 ug/mL.

Submit a product review to Biocompare.com

Submit a review of this product to Biocompare.com to receive a \$20 Amazon.com giftcard! Your reviews help your fellow scientists make the right decisions. Thank you for your contribution.



Anti-SPATA1 Antibody

For Research Use Only. Not for use in diagnostic procedures.