

## Anti-ZBED2 Antibody

Catalog Number: A18251

### About ZBED2

The ZBED2 protein possesses a BED-type zinc finger, a 50 to 60 amino acid domain that contains a characteristic motif with two highly conserved aromatic positions, as well as a shared pattern of cysteines and histidines that is predicted to form the zinc finger. ZBED2 was identified through a screening of 37 human gastric cancer cDNA libraries. While the function of this protein unknown at this time, the presence of the zinc finger suggests that it may have DNA or RNA binding properties.

### Overview

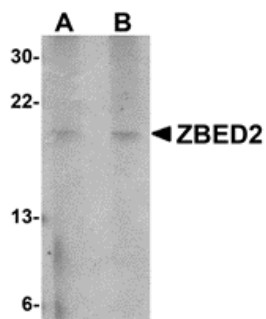
Product Name	Anti-ZBED2 Antibody
Reactive Species	Human
Description	Boster Bio Anti-ZBED2 Antibody (Catalog # A18251). Tested in ELISA, WB, ICC applications. This antibody reacts with Human.
Application	ELISA, ICC, WB
Clonality	Polyclonal
Formulation	ZBED2 Antibody is supplied in PBS containing 0.02% sodium azide.
Storage Instructions	ZBED2 antibody can be stored at 4°C for three months and -20°C, stable for up to one year. Avoid repeated freeze-thaw cycles. Antibodies should not be exposed to prolonged high temperatures.
Host	Rabbit
Uniprot ID	Q9BTP6

### Technical Details

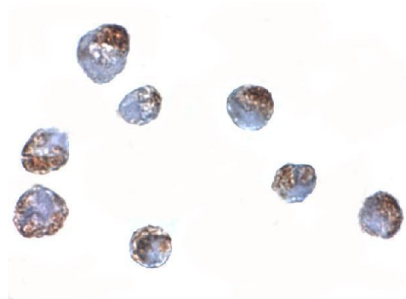
Immunogen	ZBED2 antibody was raised against a 15 amino acid synthetic peptide from near the amino terminus of human ZBED2. The immunogen is located within the first 50 amino acids of ZBED2.
Predicted Reactive Species	Rat
Cross Reactivity	This antibody is predicted to have no cross-reactivity to ZBED1 or ZBED3.
Isotype	IgG
Form	Liquid
Concentration	1 mg/mL
Purification	ZBED2 Antibody is affinity chromatography purified via peptide column.
Suggested Dilutions	ZBED2 antibody can be used for detection of ZBED2 by Western blot at 1 - 2 ug/mL. Antibody can

also be used for immunocytochemistry starting at 5 ug/mL.  
Antibody validated: Western Blot in human samples and Immunocytochemistry in human samples.  
All other applications and species not yet tested. Optimal dilutions for each application should be determined by the researcher.

## Anti-ZBED2 Antibody (A18251) Images



Western blot analysis of ZBED2 in A549 cell lysate with ZBED2 antibody at (A) 1 and (B) 2 ug/mL.



Immunocytochemistry of ZBED2 in A549 cells with ZBED2 antibody at 5 ug/mL.

### Submit a product review to Biocompare.com

Submit a review of this product to Biocompare.com to receive a \$20 Amazon.com giftcard! Your reviews help your fellow scientists make the right decisions. Thank you for your contribution.



Anti-ZBED2 Antibody

For Research Use Only. Not for use in diagnostic procedures.