

## Anti-CTAG1B CTAG1A Antibody

Catalog Number: A18294

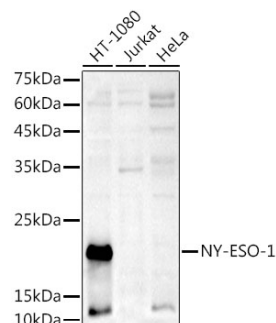
### Overview

Product Name	Anti-CTAG1B CTAG1A Antibody
Reactive Species	Human
Description	Boster Bio Anti-CTAG1B CTAG1A Antibody catalog # A18294. Tested in WB,IHC applications. This antibody reacts with Human.
Application	IHC, WB
Clonality	Polyclonal
Formulation	Rabbit IgG, 1mg/ml in PBS with 0.02% sodium azide, 50% glycerol, pH7.2
Storage Instructions	Store at -20°C for one year. For short term storage and frequent use, store at 4°C for up to one month. Avoid repeated freeze-thaw cycles.
Host	Rabbit
Uniprot ID	P78358

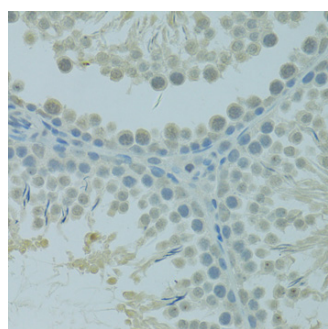
### Technical Details

Immunogen	A synthetic peptide of human NY-ESO-1(P78358).
Isotype	IgG
Form	Liquid
Concentration	1 mg/ml
Purification	The antibody was affinity-purified from rabbit antiserum by affinity-chromatography using epitope-specific immunogen and the purity is > 95% (by SDS-PAGE).
Suggested Dilutions	WB: 1:500-1:2000 IHC: 1:50-1:200

## Anti-CTAG1B CTAG1A Antibody (A18294) Images



Western blot analysis of extracts of various cell lines, using NY-ESO-1 antibody at 1:1000 dilution. Secondary antibody: HRP Goat Anti-Rabbit IgG at 1:10000 dilution. Lysates/proteins: 25ug per lane. Blocking buffer: 3% nonfat dry milk in TBST. Detection: ECL Basic Kit. Exposure time: 180s.



Immunohistochemistry of paraffin-embedded human testis using NY-ESO-1 Rabbit pAb at dilution of 1:150. Perform high pressure antigen retrieval with 10 mM Tris/EDTA buffer pH 8.0 before commencing with IHC staining protocol.

### Submit a product review to Biocompare.com

Submit a review of this product to Biocompare.com to receive a \$20 Amazon.com giftcard! Your reviews help your fellow scientists make the right decisions. Thank you for your contribution.



### Anti-CTAG1B CTAG1A Antibody

For Research Use Only. Not for use in diagnostic procedures.