

Anti-POTE15 POTE3 Antibody

Catalog Number: A18495

About POTE3

This gene is upstream of, and in a head-to-head orientation with the gene for the mitochondrial ribosomal protein L34. The predicted protein contains alpha/beta hydrolase fold and secretory lipase domains.

Ota T., Nat. Genet. 36:40-45(2004).

The MGC Project Team; Genome Res. 14:2121-2127(2004).

Overview

| | |
|----------------------|--|
| Product Name | Anti-POTE15 POTE3 Antibody |
| Reactive Species | Human |
| Description | Boster Bio Anti-POTE15 POTE3 Antibody catalog # A18495. Tested in ELISA, IHC, WB applications. This antibody reacts with Human. |
| Application | ELISA, IHC, WB |
| Clonality | Polyclonal |
| Formulation | Liquid in PBS containing 50% glycerol, 0.5% BSA and 0.02% sodium azide. |
| Storage Instructions | Store at -20°C for one year. For short term storage and frequent use, store at 4°C for up to one month. Avoid repeated freeze-thaw cycles. |
| Host | Rabbit |
| Uniprot ID | A0JP26 |

Technical Details

| | |
|----------------------------|---|
| Immunogen | Synthesized peptide derived from human POTE15 |
| Predicted Reactive Species | Chimpanzee, Drosophila, Macaque |
| Isotype | IgG |
| Form | Liquid |
| Concentration | 1 mg/ml |
| Purification | The antibody was affinity-purified from rabbit antiserum by affinity-chromatography using epitope-specific immunogen. |
| Suggested Dilutions | Dilute the sample so that the expected range of concentrations fall within the detection range of this kit. |

If the expected range of concentration is unknown, a pilot test should be conducted to decide the optimal dilution ratio for your samples.

Some PubMed article(s) citing the expression level of this target are as follows:

Boster Bio's internal QC testing used:

WB 1:500-1:2000

IHC 1:100-1:300

ELISA 1:5000

Anti-POTE15 POTE13 Antibody (A18495) Images

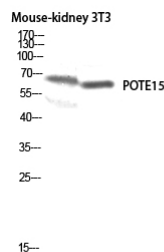


Figure 1. Western blotting validation for Anti-POTE15 POTE13 Antibody A18495

Western Blot (WB) analysis of Mouse Kidney 3T3 lysis using POTE15 antibody. Electrophoresis was performed on a SDS-PAGE gel. To determine SDS-PAGE gel concentration

Submit a product review to Biocompare.com

Submit a review of this product to Biocompare.com to receive a \$20 Amazon.com giftcard! Your reviews help your fellow scientists make the right decisions. Thank you for your contribution.



Anti-POTE15 POTE13 Antibody