

Anti-TOMM20L Antibody Picoband®

Catalog Number: A18568

About TOMM20L

Predicted to enable mitochondrion targeting sequence binding activity. Predicted to contribute to protein transmembrane transporter activity. Predicted to be involved in protein import into mitochondrial matrix and tRNA import into mitochondrion. Predicted to be integral component of membrane. Predicted to be part of mitochondrial outer membrane translocase complex. Predicted to be integral component of mitochondrial outer membrane.

Overview

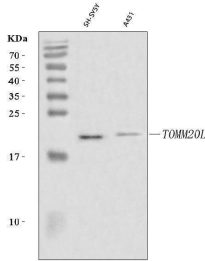
Product Name	Anti-TOMM20L Antibody Picoband®
Reactive Species	Human
Description	Boster Bio Anti-TOMM20L Antibody Picoband® catalog # A18568. Tested in Flow Cytometry, WB applications. This antibody reacts with Human. The brand Picoband indicates this is a premium antibody that guarantees superior quality, high affinity, and strong signals with minimal background in Western blot applications. Only our best-performing antibodies are designated as Picoband, ensuring unmatched performance.
Application	Flow Cytometry, WB
Clonality	Polyclonal
Formulation	Each vial contains 4 mg Trehalose, 0.9 mg NaCl, 0.2 mg Na ₂ HPO ₄ .
Storage Instructions	At -20°C for one year from date of receipt. After reconstitution, at 4°C for one month. It can also be aliquotted and stored frozen at -20°C for six months. Avoid repeated freezing and thawing.
Host	Rabbit
Uniprot ID	Q6UXN7

Technical Details

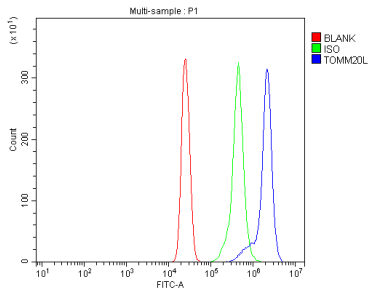
Immunogen	A synthetic peptide corresponding to a sequence at the C-terminus of human TOMM20L, which shares 70% amino acid (aa) sequence identity with mouse TOMM20L.
Recommended Detection Systems	Boster recommends Enhanced Chemiluminescent Kit with anti-Rabbit IgG (EK1002) for Western blot.
Cross Reactivity	No cross-reactivity with other proteins.
Isotype	Rabbit IgG
Form	Lyophilized
Concentration	Adding 0.2 ml of distilled water will yield a concentration of 500 ug/ml.

Purification	Immunogen affinity purified.
Suggested Dilutions	Western blot, 0.25-0.5 ug/ml, Human Flow Cytometry (Fixed), 1-3 ug/1x10 ⁶ cells, Human

Anti-TOMM20L Antibody Picoband® (A18568) Images



Western blot analysis of TOMM20L using anti-TOMM20L antibody (A18568). Electrophoresis was performed on a 5-20% SDS-PAGE gel at 70V (Stacking gel) / 90V (Resolving gel) for 2-3 hours. The sample well of each lane was loaded with 30 ug of sample under reducing conditions. Lane 1: human SH-SY5Y whole cell lysates, Lane 2: human A431 whole cell lysates. After electrophoresis, proteins were transferred to a nitrocellulose membrane at 150 mA for 50-90 minutes. Blocked the membrane with 5% non-fat milk/TBS for 1.5 hour at RT. The membrane was incubated with rabbit anti-TOMM20L antigen affinity purified polyclonal antibody (Catalog # A18568) at 0.5 ug/mL overnight at 4°C, then washed with TBS-0.1%Tween 3 times with 5 minutes each and probed with a goat anti-rabbit IgG-HRP secondary antibody at a dilution of 1:5000 for 1.5 hour at RT. The signal is developed using an Enhanced Chemiluminescent detection (ECL) kit (Catalog # EK1002) with Tanon 5200 system. A specific band was detected for TOMM20L at approximately 21 kDa. The expected band size for TOMM20L is at 21 kDa.



Flow Cytometry analysis of U937 cells using anti-TOMM20L antibody (A18568). Overlay histogram showing U937 cells stained with A18568 (Blue line). The cells were fixed with 4% paraformaldehyde and blocked with 10% normal goat serum. And then incubated with rabbit anti-TOMM20L Antibody (A18568, 1 ug/1x10⁶ cells) for 30 min at 20°C. DyLight®488 conjugated goat anti-rabbit IgG (BA1127, 5-10 ug/1x10⁶ cells) was used as secondary antibody for 30 minutes at 20°C. Isotype control antibody (Green line) was rabbit IgG (1 ug/1x10⁶) used under the same conditions. Unlabelled sample without incubation with primary antibody and secondary antibody (Red line) was used as a blank control.

Submit a product review to [Biocompare.com](https://www.biocompare.com)

Submit a review of this product to [Biocompare.com](https://www.biocompare.com) to receive a \$20 Amazon.com giftcard! Your reviews help your fellow scientists make the right decisions. Thank you for your contribution.



Anti-TOMM20L Antibody

For Research Use Only. Not for use in diagnostic procedures.