

Anti-Olfactory receptor 52E5 Antibody

Catalog Number: A18783

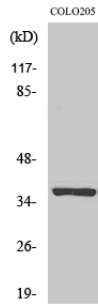
Overview

Product Name	Anti-Olfactory receptor 52E5 Antibody
Reactive Species	Human
Description	Boster Bio Anti-Olfactory receptor 52E5 Antibody catalog # A18783. Tested in WB, IF, ELISA applications. This antibody reacts with Human.
Application	ELISA, IF, WB
Clonality	Polyclonal
Formulation	Liquid in PBS containing 50% glycerol, 0.5% stabilizing protein and 0.02% sodium azide. This antibody is supplied in a stabilized formulation. Compatibility with conjugation reactions depends on the chemistry of the conjugation method used. For conjugation methods that are not compatible with the stabilizing components present in this formulation, a carrier-free antibody format is required.
Storage Instructions	Store at -20°C for one year. For short term storage and frequent use, store at 4°C for up to one month. Avoid repeated freeze-thaw cycles.
Host	Rabbit
Uniprot ID	Q8NH55

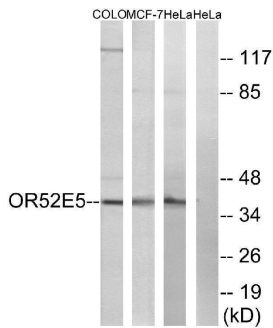
Technical Details

Immunogen	The antiserum was produced against synthesized peptide derived from human OR52E5. AA range:199-248
Isotype	IgG
Form	Liquid
Concentration	1 mg/ml
Purification	Immunogen affinity purified
Suggested Dilutions	WB 1:500-1:2000 IF 1:200-1:1000 ELISA 1:20000

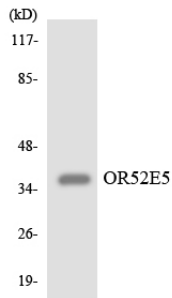
Anti-Olfactory receptor 52E5 Antibody (A18783) Images



Western Blot analysis of various cells using Olfactory receptor 52E5 Polyclonal Antibody



Western blot analysis of lysates from COLO, MCF-7, and HeLa cells, using OR52E5 Antibody. The lane on the right is blocked with the synthesized peptide.



Western blot analysis of the lysates from HeLa cells using OR52E5 antibody.

Submit a product review to [Biocompare.com](https://www.biocompare.com)

Submit a review of this product to [Biocompare.com](https://www.biocompare.com) to receive a \$20 Amazon.com giftcard! Your reviews help your fellow scientists make the right decisions. Thank you for your contribution.



Anti-Olfactory receptor 52E5 Antibody

For Research Use Only. Not for use in diagnostic procedures.