

## Anti-RPLP0P6 Antibody (N-term)

Catalog Number: A18823

### About RPLP0P6

Ribosomal protein P0 is the functional equivalent of E.coli protein L10 (By similarity).

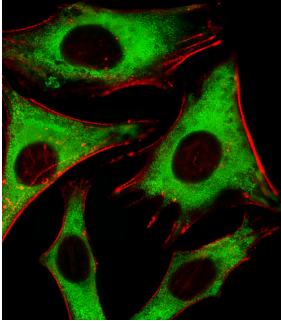
### Overview

Product Name	Anti-RPLP0P6 Antibody (N-term)
Reactive Species	Human
Description	Boster Bio Anti-RPLP0P6 Antibody (N-term) (Catalog # A18823). Tested in IHC-P, IF, WB application(s). This antibody reacts with Human.
Application	IF, IHC-P, WB
Clonality	Polyclonal
Formulation	Purified polyclonal antibody supplied in PBS with 0.09% (W/V) sodium azide.
Storage Instructions	Maintain refrigerated at 2-8°C for up to 2 weeks. For long-term storage, store at -20°C in small aliquots to prevent freeze-thaw cycles.
Host	Rabbit
Uniprot ID	Q8NHW5

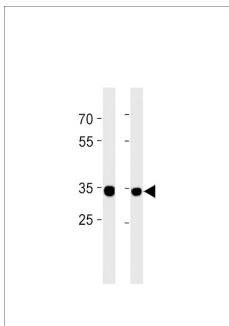
### Technical Details

Immunogen	This RPLP0P6 antibody is generated from rabbits immunized with a KLH conjugated synthetic peptide between 1-30 amino acids from the N-terminal region of human RPLP0P6.
Predicted Reactive Species	Bovine, Chicken, Mouse, Pig, Rat, Zebrafish
Isotype	Rabbit IgG
Purification	This antibody is purified through a protein A column, followed by peptide affinity purification.
Suggested Dilutions	IF: 1:25 WB: 1:1000 IHC-P: 1:25

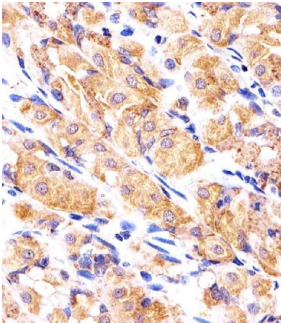
## Anti-RPLP0P6 Antibody (N-term) (A18823) Images



Fluorescent image of HeLa cells stained with RPLP0P6 Antibody (N-term). A18823 was diluted at 1:25 dilution. An Alexa Fluor 488-conjugated goat anti-rabbit IgG at 1:400 dilution was used as the secondary antibody (green). Cytoplasmic actin was counterstained with Alexa Fluor® 555 conjugated with Phalloidin (red).



RPLP0P6 Antibody (N-term) western blot analysis in U251PC-3 cell line lysates (35ug/lane). This demonstrates the RPLP0P6 antibody detected the RPLP0P6 protein (arrow).



Immunohistochemical analysis of paraffin-embedded H. stomach section using RPLP0P6 Antibody (N-term). A18823 was diluted at 1:25 dilution. A undiluted biotinylated goat polyvalent antibody was used as the secondary, followed by DAB staining.

### Submit a product review to [Biocompare.com](https://www.biocompare.com)

Submit a review of this product to [Biocompare.com](https://www.biocompare.com) to receive a \$20 Amazon.com giftcard! Your reviews help your fellow scientists make the right decisions. Thank you for your contribution.



Anti-RPLP0P6 Antibody (N-term)

For Research Use Only. Not for use in diagnostic procedures.