

Anti-GTF2H2C Antibody (C-term)

Catalog Number: A19016-1

About GTF2H2C

Component of the core-TFIID basal transcription factor involved in nucleotide excision repair (NER) of DNA and, when complexed to CAK, in RNA transcription by RNA polymerase II (By similarity).

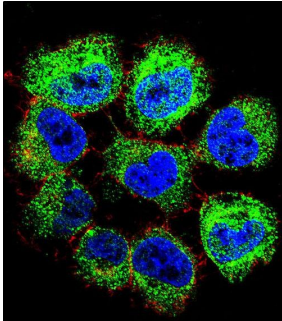
Overview

Product Name	Anti-GTF2H2C Antibody (C-term)
Reactive Species	Human
Description	Boster Bio Anti-GTF2H2C Antibody (C-term) (Catalog # A19016-1). Tested in WB, IHC-P, IF application(s). This antibody reacts with Human.
Application	IF, IHC-P, WB
Clonality	Polyclonal
Formulation	Purified polyclonal antibody supplied in PBS with 0.09% (W/V) sodium azide.
Storage Instructions	Maintain refrigerated at 2-8°C for up to 2 weeks. For long-term storage, store at -20°C in small aliquots to prevent freeze-thaw cycles.
Host	Rabbit
Uniprot ID	Q6P1K8

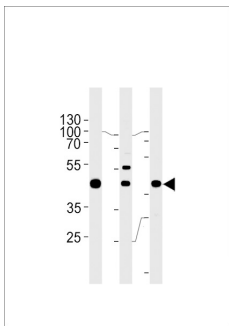
Technical Details

Immunogen	This GTF2H2C antibody is generated from rabbits immunized with a KLH conjugated synthetic peptide between 314-343 amino acids from the C-terminal region of human GTF2H2C.
Predicted Reactive Species	Bovine, Chicken, Mouse, Pig, Rat, Zebrafish
Isotype	Rabbit IgG
Purification	This antibody is purified through a protein A column, followed by peptide affinity purification.
Suggested Dilutions	IF: 1:10-1:50 WB: 1:1000 IHC-P: 1:10-1:50

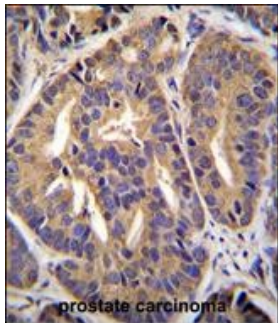
Anti-GTF2H2C Antibody (C-term) (A19016-1) Images



Confocal immunofluorescent analysis of GTF2H2C Antibody (C-term) with NCI-H460 cell followed by Alexa Fluor 488-conjugated goat anti-rabbit IgG (green). Actin filaments have been labeled with Alexa Fluor 555 phalloidin (red). DAPI was used to stain the cell nuclear (blue).



GTF2H2C Antibody(C-term) western blot analysis in A549, K562, MCF-7 cell line lysates (35ug/lane). This demonstrates the GTF2H2C antibody detected the GTF2H2C protein (arrow).



GTF2H2C Antibody (C-term) immunohistochemistry analysis in formalin fixed and paraffin embedded human prostate carcinoma followed by peroxidase conjugation of the secondary antibody and DAB staining. This data demonstrates the use of GTF2H2C Antibody (C-term) for immunohistochemistry. Clinical relevance has not been evaluated.

Submit a product review to Biocompare.com

Submit a review of this product to Biocompare.com to receive a \$20 Amazon.com giftcard! Your reviews help your fellow scientists make the right decisions. Thank you for your contribution.



Anti-GTF2H2C Antibody (C-term)

For Research Use Only. Not for use in diagnostic procedures.