

## Anti-SPRYD3 Antibody

Catalog Number: A19152

### About SPRYD3

The SPRY domain-containing protein 3 (SPRYD3) is a member of a family of proteins whose sole common characteristic is the presence of a SPRY domain. SPRY domains are structural domains that were first described in the fungal *Dictyostelium discoideum* tyrosine kinase spore lysis A. In most systems SPRY domains provide binding sites for regulatory proteins or intramolecular binding sites that maintain the structural integrity of a protein. Little is known of the function of the SPRYD3 protein.

### Overview

Product Name	Anti-SPRYD3 Antibody
Reactive Species	Human, Mouse, Rat
Description	Boster Bio Anti-SPRYD3 Antibody (Catalog # A19152). Tested in ELISA, WB, IHC-P, IF applications. This antibody reacts with Human, Mouse, Rat.
Application	ELISA, IF, IHC-P, WB
Clonality	Polyclonal
Formulation	SPRYD3 Antibody is supplied in PBS containing 0.02% sodium azide.
Storage Instructions	SPRYD3 antibody can be stored at 4°C for three months and -20°C, stable for up to one year. Avoid repeated freeze-thaw cycles. Antibodies should not be exposed to prolonged high temperatures.
Host	Rabbit
Uniprot ID	Q8NCJ5

### Technical Details

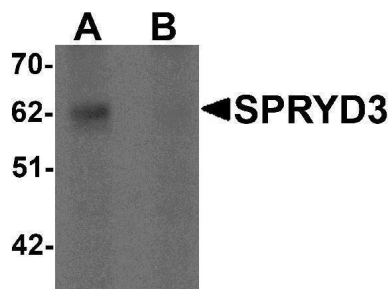
Immunogen	SPRYD3 antibody was raised against a 16 amino acid synthetic peptide near the center of human SPRYD3. The immunogen is located within amino acids 260 - 310 of SPRYD3.
Predicted Reactive Species	Rat
Cross Reactivity	SPRYD3 antibody is predicted to not cross-react with other SPRYD protein family members. At least two isoforms of SPRYD3 are known to exist.
Isotype	IgG
Form	Liquid
Concentration	1 mg/mL
Purification	SPRYD3 Antibody is affinity chromatography purified via peptide column.

Suggested Dilutions

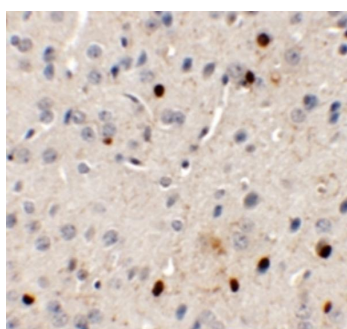
SPRYD3 antibody can be used for detection of SPRYD3 by Western blot at 1 ug/mL. Antibody can also be used for immunohistochemistry starting at 5 ug/mL. For immunofluorescence start at 20 ug/mL.

Antibody validated: Western Blot in human samples; Immunohistochemistry in mouse samples and Immunofluorescence in mouse samples. All other applications and species not yet tested. Optimal dilutions for each application should be determined by the researcher.

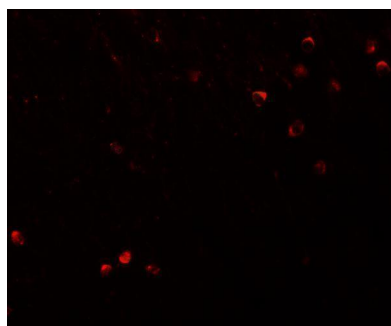
## Anti-SPRYD3 Antibody (A19152) Images



Western blot analysis of SPRYD3 in human brain tissue lysate with SPRYD3 antibody at 1 ug/mL in (A) the absence and (B) the presence of blocking peptide



Immunohistochemistry of SPRYD3 in mouse brain tissue with SPRYD3 antibody at 5 ug/mL.



Immunofluorescence of SPRYD3 in mouse brain tissue with SPRYD3 antibody at 20 ug/mL.

### Submit a product review to [Biocompare.com](https://www.biocompare.com)

Submit a review of this product to [Biocompare.com](https://www.biocompare.com) to receive a \$20 Amazon.com giftcard! Your reviews help your fellow scientists make the right decisions. Thank you for your contribution.



Anti-SPRYD3 Antibody

For Research Use Only. Not for use in diagnostic procedures.