

Anti-MMTV env Antibody

Catalog Number: A30410

About ENV

This antibody is suitable for Cancer, Enzyme, and Viral research. Mouse mammary tumor virus surface protein binds the virus to the receptor of the host cells triggering transmembrane protein refolding. This activates the fusion peptide and the structure coils and repeats positioning the fusion peptide near the C-terminus region. Inturn increasing close proximity and then fusion of viral and cell membranes. Anti-MMTV is ideal for researchers interested in Cancer, Viral, and Enzyme research.

Overview

Product Name	Anti-MMTV env Antibody
Reactive Species	Virus
Description	Boster Bio Anti-MMTV env Antibody (Catalog # A30410). Tested in WB applications. This antibody reacts with Virus.
Application	ELISA, WB
Clonality	Polyclonal
Formulation	0.02 M Potassium Phosphate, 0.15 M Sodium Chloride, pH 7.2, 0.01% (w/v) Sodium Azide
Storage Instructions	Store vial at -20°C prior to opening. Aliquot contents and freeze at -20°C or below for extended storage. Avoid cycles of freezing and thawing. Centrifuge product if not completely clear after standing at room temperature. This product is stable for several weeks at 4°C as an undiluted liquid. Dilute only prior to immediate use. Expiration date is one (1) year from date of opening. (Ship on dry ice.)
Host	Rabbit
Uniprot ID	P03374

Technical Details

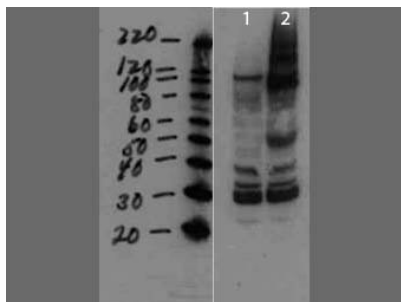
Immunogen	MMTV was prepared from whole rabbit serum produced by repeated immunizations with a full length sequence for mouse mammary tumor virus surface protein tagged with His.
Predicted Reactive Species	Bovine, Canine, Equine, Guinea Pig, Pig, Rabbit, Zebrafish
Isotype	Antiserum
Form	Liquid (sterile filtered)
Concentration	66 mg/mL by Refractometry
Purification	Mouse mammary tumor virus surface protein antibody was prepared from monospecific, delipidated and defibrinated antiserum, with addition of sodium azide to 0.01% and cross adsorbed with 6X HIS.

A BLAST analysis was used to suggest cross-reactivity with MMTV from mouse based on a 100% homology with the immunizing sequence. Reactivity against homologues from other sources is not known.

Suggested Dilutions

ELISA: 1:10,000-1:20,000
WB: 1:1000-1:2000
Anti-MMTV Antibody has been tested for use in western blotting. Specific conditions for reactivity should be optimized by the end user. Expect band approximately 41.2 kDa in size corresponding to MMTV surface protein by western blotting in the appropriate cell lysate or extract.

Anti-MMTV env Antibody (A30410) Images



Western Blot of Rabbit anti-MMTV antibody. Lane 1: cell lysate negative control. Lane 2: cell lysate spiked with purified virus. Load: 10 μ g per lane. Primary antibody: Mouse Mammary Tumor Virus Surface Protein antibody at 1:1000 for overnight at 4°C. Secondary antibody: IRDye800™ rabbit secondary antibody at 1:10,000 for 45 min at RT. Block: 5% BLOTTO overnight at 4°C. Predicted/Observed size: ~41.2kDa for MMTV. Other bands: higher bands not unexpected since proteins are made from a larger precursor.

Submit a product review to Biocompare.com

Submit a review of this product to Biocompare.com to receive a \$20 Amazon.com giftcard! Your reviews help your fellow scientists make the right decisions. Thank you for your contribution.



Anti-MMTV env Antibody

For Research Use Only. Not for use in diagnostic procedures.