

Anti-MKP-1/2 DUSP1 Antibody

Catalog Number: A30451

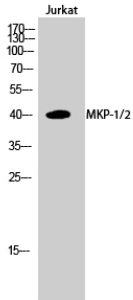
Overview

| | |
|----------------------|---|
| Product Name | Anti-MKP-1/2 DUSP1 Antibody |
| Reactive Species | Human, Mouse, Rat |
| Description | Boster Bio Anti-MKP-1/2 DUSP1 Antibody (Catalog# A30451). Tested in WB, IHC, ICC, IF, ELISA applications. This antibody reacts with Human, Mouse, Rat. |
| Application | ELISA, IF, IHC, ICC, WB |
| Clonality | Polyclonal |
| Formulation | PBS containing 50% glycerol, 0.5% stabilizing protein and 0.02% sodium azide. This antibody is supplied in a stabilized formulation. Compatibility with conjugation reactions depends on the chemistry of the conjugation method used. For conjugation methods that are not compatible with the stabilizing components present in this formulation, a carrier-free antibody format is required. |
| Storage Instructions | Store at -20°C for one year. For short-term storage and frequent use, store at 4°C for up to one month. Avoid repeated freeze-thaw cycles. |
| Host | Rabbit |
| Uniprot ID | P28562 |

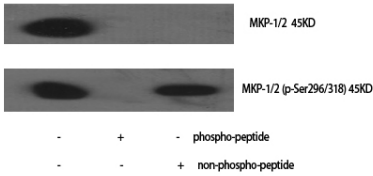
Technical Details

| | |
|---------------------|--|
| Immunogen | A peptide derived from human MKP-1/2. Immunogen sequence location: 261-310 |
| Isotype | Rabbit IgG |
| Form | Liquid |
| Concentration | 0.5-1mg/ml, actual concentration vary by lot. Use suggested dilution ratio to decide dilution procedure. |
| Purification | The antibody was purified from rabbit antiserum by affinity-chromatography using immunogen. |
| Suggested Dilutions | WB 1:500 - 1:2000. IHC 1:100 - 1:300. ELISA: 1:20000. ICC/IF 1:50-200 |

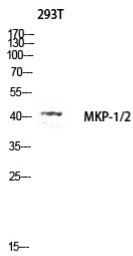
Anti-MKP-1/2 DUSP1 Antibody (A30451) Images



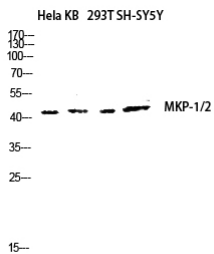
Western Blot analysis of Jurkat cells using MKP-1/2 Polyclonal Antibody diluted at 1:1000.



Western Blot analysis of various cells using MKP-1/2 Polyclonal Antibody diluted at 1:1000.

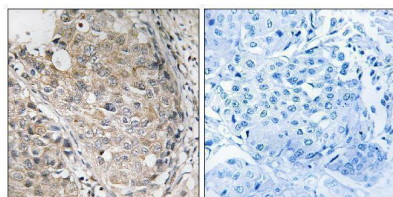
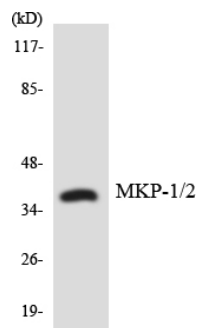


Western blot analysis of 293T lysis using MKP-1/2 antibody. Antibody was diluted at 1:1000.

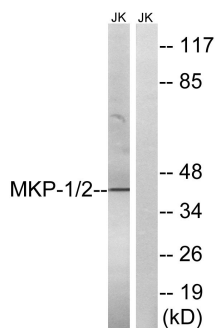


Western blot analysis of HeLa KB 293T SH-SY5Y lysis using MKP-1/2 antibody. Antibody was diluted at 1:1000.

Western blot analysis of the lysates from HepG2 cells using MKP-1/2 antibody.



Immunohistochemistry analysis of paraffin-embedded human breast carcinoma tissue, using MKP-1/2 Antibody. The picture on the right is blocked with the synthesized peptide.



Western blot analysis of lysates from Jurkat cells, using MKP-1/2 Antibody. The lane on the right is blocked with the synthesized peptide.

Submit a product review to Biocompare.com

Submit a review of this product to Biocompare.com to receive a \$20 Amazon.com giftcard! Your reviews help your fellow scientists make the right decisions. Thank you for your contribution.



Anti-MKP-1/2 DUSP1 Antibody

For Research Use Only. Not for use in diagnostic procedures.