

Anti-NKX6.3 Antibody

Catalog Number: A30461

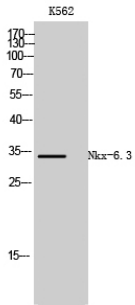
Overview

Product Name	Anti-NKX6.3 Antibody
Reactive Species	Human, Monkey, Mouse
Description	Boster Bio Anti-NKX6.3 Antibody (Catalog# A30461). Tested in WB, ICC, IF, ELISA applications. This antibody reacts with Human, Mouse, Monkey.
Application	ELISA, IF, ICC, WB
Clonality	Polyclonal
Formulation	PBS containing 50% glycerol, 0.5% stabilizing protein and 0.02% sodium azide. This antibody is supplied in a stabilized formulation. Compatibility with conjugation reactions depends on the chemistry of the conjugation method used. For conjugation methods that are not compatible with the stabilizing components present in this formulation, a carrier-free antibody format is required.
Storage Instructions	Store at -20°C for one year. For short-term storage and frequent use, store at 4°C for up to one month. Avoid repeated freeze-thaw cycles.
Host	Rabbit
Uniprot ID	A6NJ46

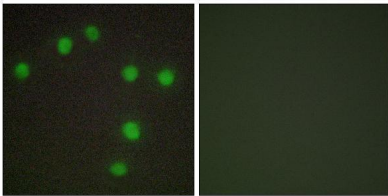
Technical Details

Immunogen	A peptide derived from human NKX6.3. Immunogen sequence location: 161-210
Isotype	Rabbit IgG
Form	Liquid
Concentration	0.5-1mg/ml, actual concentration vary by lot. Use suggested dilution ratio to decide dilution procedure.
Purification	The antibody was purified from rabbit antiserum by affinity-chromatography using immunogen.
Suggested Dilutions	WB 1:500 - 1:2000. ICC/IF 1:200 - 1:1000. ELISA: 1:10000. Not yet tested in other applications.

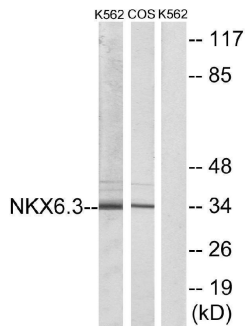
Anti-NKX6.3 Antibody (A30461) Images



Western Blot analysis of K562 cells using Nkx-6.3 Polyclonal Antibody.



Immunofluorescence analysis of HUVEC cells, using NKX6.3 Antibody. The picture on the right is blocked with the synthesized peptide.



Western blot analysis of lysates from K562 and COS7 cells, using NKX6.3 Antibody. The lane on the right is blocked with the synthesized peptide.

Submit a product review to [Biocompare.com](https://www.biocompare.com)

Submit a review of this product to [Biocompare.com](https://www.biocompare.com) to receive a \$20 Amazon.com giftcard! Your reviews help your fellow scientists make the right decisions. Thank you for your contribution.



Anti-NKX6.3 Antibody

For Research Use Only. Not for use in diagnostic procedures.