

## Anti-MYST2 Antibody

Catalog Number: A30463

### Overview

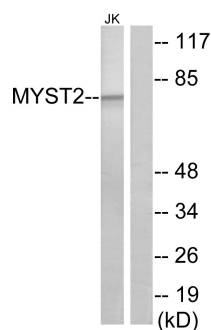
|                      |  |
|----------------------|--|
| Product Name         | Anti-MYST2 Antibody  |
| Reactive Species     | Human, Mouse, Rat  |
| Description          | Boster Bio Anti-MYST2 Antibody (Catalog# A30463). Tested in WB, IF, ICC, ELISA applications. This antibody reacts with Human, Mouse, Rat.  |
| Application          | ELISA, IF, ICC, WB   |
| Clonality            | Polyclonal   |
| Formulation          | PBS containing 50% glycerol, 0.5% BSA and 0.02% sodium azide.  |
| Storage Instructions | Store at -20°C for one year. For short-term storage and frequent use, store at 4°C for up to one month. Avoid repeated freeze-thaw cycles. |
| Host                 | Rabbit   |
| Uniprot ID           | O95251   |

### Technical Details

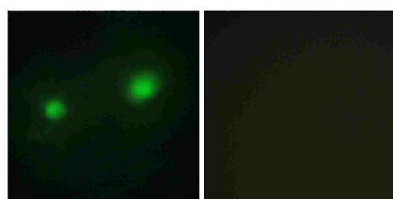
|                            |  |
|----------------------------|--|
| Immunogen                  | A peptide derived from human MYST2. Immunogen sequence location: 131-180   |
| Predicted Reactive Species | Bovine, Canine, Chicken, Primate, Sheep, Xenopus, Zebrafish  |
| Isotype                    | Rabbit IgG   |
| Form                       | Liquid   |
| Concentration              | 0.5-1mg/ml, actual concentration vary by lot. Use suggested dilution ratio to decide dilution procedure.   |
| Purification               | The antibody was purified from rabbit antiserum by affinity-chromatography using immunogen.  |
| Suggested Dilutions        | <p>Dilute the sample so that the expected range of concentrations fall within the detection range of this kit.</p> <p>If the expected range of concentration is unknown, a pilot test should be conducted to decide the optimal dilution ratio for your samples.</p> <p>Some PubMed article(s) citing the expression level of this target are as follows:</p> <p>Boster Bio's internal QC testing used:</p> <p>Western Blot, 1:500 - 1:2000</p> <p>Immunofluorescence, 1:200 - 1:1000</p> <p>ELISA, 1:20000</p> <p>Not yet tested in other applications.</p> |



## Anti-MYST2 Antibody (A30463) Images



Western blot analysis of lysates from Jurkat cells, using MYST2 Antibody. The lane on the right is blocked with the synthesized peptide.



Immunofluorescence analysis of HUVEC cells, using MYST2 Antibody. The picture on the right is blocked with the synthesized peptide.

## Submit a product review to Biocompare.com

Submit a review of this product to Biocompare.com to receive a \$20 Amazon.com giftcard! Your reviews help your fellow scientists make the right decisions. Thank you for your contribution.



Anti-MYST2 Antibody