

Anti-CKS1 CKS1B Antibody

Catalog Number: A30464

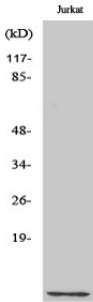
Overview

Product Name	Anti-CKS1 CKS1B Antibody
Reactive Species	Human, Mouse
Description	Boster Bio Anti-CKS1 CKS1B Antibody (Catalog# A30464). Tested in WB, ICC, IF, ELISA applications. This antibody reacts with Human, Mouse.
Application	ELISA, IF, ICC, WB
Clonality	Polyclonal
Formulation	PBS containing 50% glycerol, 0.5% stabilizing protein and 0.02% sodium azide. This antibody is supplied in a stabilized formulation. Compatibility with conjugation reactions depends on the chemistry of the conjugation method used. For conjugation methods that are not compatible with the stabilizing components present in this formulation, a carrier-free antibody format is required.
Storage Instructions	Store at -20°C for one year. For short-term storage and frequent use, store at 4°C for up to one month. Avoid repeated freeze-thaw cycles.
Host	Rabbit
Uniprot ID	P61024

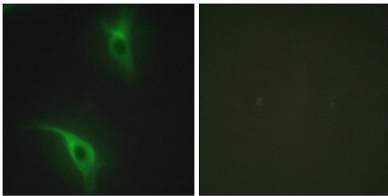
Technical Details

Immunogen	A peptide derived from human CKS1. Immunogen sequence location: 10-59
Isotype	Rabbit IgG
Form	Liquid
Concentration	0.5-1mg/ml, actual concentration vary by lot. Use suggested dilution ratio to decide dilution procedure.
Purification	The antibody was purified from rabbit antiserum by affinity-chromatography using immunogen.
Suggested Dilutions	WB 1:500 - 1:2000. ICC/IF 1:200 - 1:1000. ELISA: 1:20000. Not yet tested in other applications.

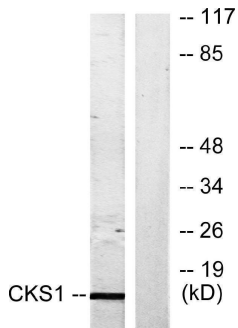
Anti-CKS1 CKS1B Antibody (A30464) Images



Western Blot analysis of various cells using Cks1 Polyclonal Antibody.



Immunofluorescence analysis of HeLa cells, using CKS1 Antibody. The picture on the right is blocked with the synthesized peptide.



Western blot analysis of lysates from Jurkat cells, treated with serum 20% 15', using CKS1 Antibody. The lane on the right is blocked with the synthesized peptide.

Submit a product review to [Biocompare.com](https://www.biocompare.com)

Submit a review of this product to [Biocompare.com](https://www.biocompare.com) to receive a \$20 Amazon.com giftcard! Your reviews help your fellow scientists make the right decisions. Thank you for your contribution.



Anti-CKS1 CKS1B Antibody

For Research Use Only. Not for use in diagnostic procedures.