

## Anti-K6PP Antibody

Catalog Number: A30471

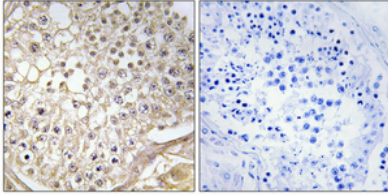
### Overview

Product Name	Anti-K6PP Antibody
Reactive Species	Human, Monkey, Mouse, Rat
Description	Boster Bio Anti-K6PP Antibody (Catalog# A30471). Tested in WB, IHC, ICC, IF, ELISA applications. This antibody reacts with Human, Mouse, Rat, Monkey.
Application	ELISA, IF, IHC, ICC, WB
Clonality	Polyclonal
Formulation	PBS containing 50% glycerol, 0.5% stabilizing protein and 0.02% sodium azide. This antibody is supplied in a stabilized formulation. Compatibility with conjugation reactions depends on the chemistry of the conjugation method used. For conjugation methods that are not compatible with the stabilizing components present in this formulation, a carrier-free antibody format is required.
Storage Instructions	Store at -20°C for one year. For short-term storage and frequent use, store at 4°C for up to one month. Avoid repeated freeze-thaw cycles.
Host	Rabbit
Uniprot ID	Q01813

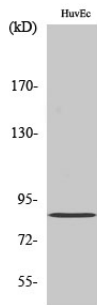
### Technical Details

Immunogen	A peptide derived from human K6PP. Immunogen sequence location: 341-390
Isotype	Rabbit IgG
Form	Liquid
Concentration	0.5-1mg/ml, actual concentration vary by lot. Use suggested dilution ratio to decide dilution procedure.
Purification	The antibody was purified from rabbit antiserum by affinity-chromatography using immunogen.
Suggested Dilutions	WB 1:500 - 1:2000. IHC 1:100 - 1:300. ICC/IF 1:200 - 1:1000. ELISA: 1:5000. Not yet tested in other applications.

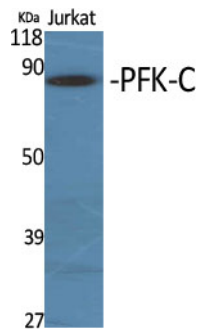
## Anti-K6PP Antibody (A30471) Images



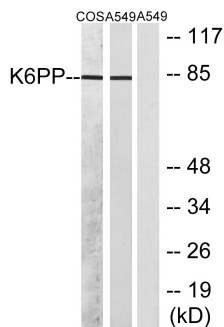
Immunohistochemical analysis of paraffin-embedded Human testis. Antibody was diluted at 1:100(4° overnight). High-pressure and temperature Tris-EDTA,pH8.0 was used for antigen retrieval. Negative control (right) obtained from antibody was pre-absorbed by immunogen peptide.



Western Blot analysis of HuvEc cells using PFK-C Polyclonal Antibody



Western Blot analysis of various cells using PFK-C Polyclonal Antibody



Western blot analysis of lysates from A549 and COS7 cells, using K6PP Antibody. The lane on the right is blocked with the synthesized peptide.

### Submit a product review to Biocompare.com

Submit a review of this product to Biocompare.com to receive a \$20 Amazon.com giftcard! Your reviews help your fellow scientists make the right decisions. Thank you for your contribution.



Anti-K6PP Antibody

For Research Use Only. Not for use in diagnostic procedures.