

## Anti-MtSSB SSBP1 Antibody

Catalog Number: A30475

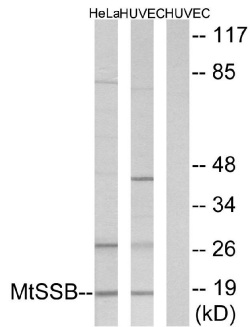
### Overview

Product Name	Anti-MtSSB SSBP1 Antibody
Reactive Species	Cow, Human, Mouse, Rat
Description	Boster Bio Anti-MtSSB SSBP1 Antibody (Catalog# A30475). Tested in WB, IHC-P, IF, ICC, ELISA applications. This antibody reacts with Human, Mouse, Rat, Cow.
Application	ELISA, IF, IHC-P, ICC, WB
Clonality	Polyclonal
Formulation	PBS containing 50% glycerol, 0.5% BSA and 0.02% sodium azide.
Storage Instructions	Store at -20°C for one year. For short-term storage and frequent use, store at 4°C for up to one month. Avoid repeated freeze-thaw cycles.
Host	Rabbit
Uniprot ID	Q04837

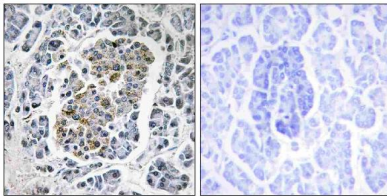
### Technical Details

Immunogen	A peptide derived from human MtSSB. Immunogen sequence location: 99-148
Isotype	Rabbit IgG
Form	Liquid
Concentration	0.5-1mg/ml, actual concentration vary by lot. Use suggested dilution ratio to decide dilution procedure.
Purification	The antibody was purified from rabbit antiserum by affinity-chromatography using immunogen.
Suggested Dilutions	Western Blot, 1:500 - 1:2000 Immunohistochemistry, 1:100 - 1:300 Immunofluorescence, 1:200 - 1:1000 ELISA, 1:20000 Not yet tested in other applications.

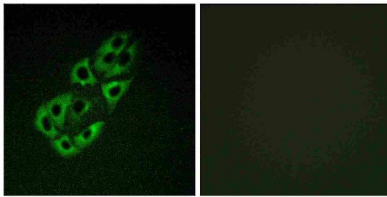
## Anti-MtSSB SSBP1 Antibody (A30475) Images



Western blot analysis of lysates from HUVEC and HeLa cells, using MtSSB Antibody. The lane on the right is blocked with the synthesized peptide.



Immunohistochemistry analysis of paraffin-embedded human pancreas tissue, using MtSSB Antibody. The picture on the right is blocked with the synthesized peptide.



Immunofluorescence analysis of A549 cells, using MtSSB Antibody. The picture on the right is blocked with the synthesized peptide.

### Submit a product review to Biocompare.com

Submit a review of this product to Biocompare.com to receive a \$20 Amazon.com giftcard! Your reviews help your fellow scientists make the right decisions. Thank you for your contribution.



Anti-MtSSB SSBP1 Antibody