

## Anti-MTG16 Antibody

Catalog Number: A30478

### Overview

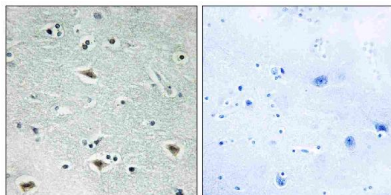
Product Name	Anti-MTG16 Antibody
Reactive Species	Human, Mouse
Description	Boster Bio Anti-MTG16 Antibody (Catalog# A30478). Tested in IHC-P, IF (paraffin), ELISA applications. This antibody reacts with Human, Mouse.
Application	ELISA, IHC-P, IF (paraffin)
Clonality	Polyclonal
Formulation	PBS containing 50% glycerol, 0.5% BSA and 0.02% sodium azide.
Storage Instructions	Store at -20°C for one year. For short-term storage and frequent use, store at 4°C for up to one month. Avoid repeated freeze-thaw cycles.
Host	Rabbit
Uniprot ID	O75081

### Technical Details

Immunogen	A peptide derived from human MTG16. Immunogen sequence location: 261-310
Isotype	Rabbit IgG
Form	Liquid
Concentration	0.5-1mg/ml, actual concentration vary by lot. Use suggested dilution ratio to decide dilution procedure.
Purification	The antibody was purified from rabbit antiserum by affinity-chromatography using immunogen.
Suggested Dilutions	Dilute the sample so that the expected range of concentrations fall within the detection range of this kit. If the expected range of concentration is unknown, a pilot test should be conducted to decide the optimal dilution ratio for your samples. Some PubMed article(s) citing the expression level of this target are as follows: Boster Bio's internal QC testing used: Immunohistochemistry, 1:100 - 1:300 ELISA, 1:20000 Not yet tested in other applications.

## Anti-MTG16 Antibody (A30478) Images

---



Immunohistochemistry analysis of paraffin-embedded human brain tissue, using MTG16 Antibody. The picture on the right is blocked with the synthesized peptide.

## Submit a product review to Biocompare.com

---

Submit a review of this product to Biocompare.com to receive a \$20 Amazon.com giftcard! Your reviews help your fellow scientists make the right decisions. Thank you for your contribution.



Anti-MTG16 Antibody