

Anti-TRA-2 alpha Antibody

Catalog Number: A30486

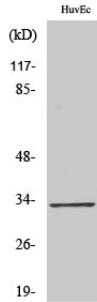
Overview

Product Name	Anti-TRA-2 alpha Antibody
Reactive Species	Human, Mouse
Description	Boster Bio Anti-TRA-2 alpha Antibody (Catalog# A30486). Tested in WB, IHC, ICC, IF, ELISA applications. This antibody reacts with Human, Mouse.
Application	ELISA, IF, IHC, ICC, WB
Clonality	Polyclonal
Formulation	PBS containing 50% glycerol, 0.5% stabilizing protein and 0.02% sodium azide. This antibody is supplied in a stabilized formulation. Compatibility with conjugation reactions depends on the chemistry of the conjugation method used. For conjugation methods that are not compatible with the stabilizing components present in this formulation, a carrier-free antibody format is required.
Storage Instructions	Store at -20°C for one year. For short-term storage and frequent use, store at 4°C for up to one month. Avoid repeated freeze-thaw cycles.
Host	Rabbit
Uniprot ID	Q13595

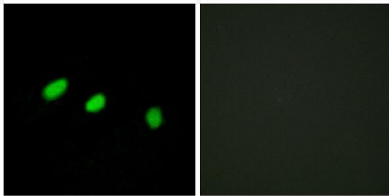
Technical Details

Immunogen	A peptide derived from human TRA-2 alpha. Immunogen sequence location: 221-270
Isotype	Rabbit IgG
Form	Liquid
Concentration	0.5-1mg/ml, actual concentration vary by lot. Use suggested dilution ratio to decide dilution procedure.
Purification	The antibody was purified from rabbit antiserum by affinity-chromatography using immunogen.
Suggested Dilutions	WB 1:500 - 1:2000. IHC 1:100 - 1:300. ICC/IF 1:200 - 1:1000. ELISA: 1:20000. Not yet tested in other applications.

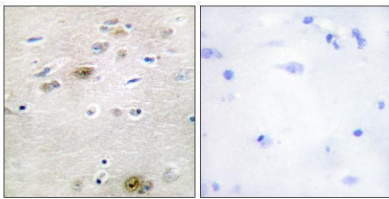
Anti-TRA-2 alpha Antibody (A30486) Images



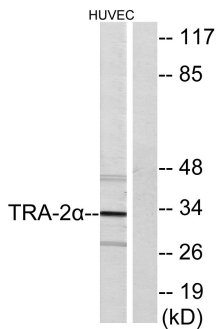
Western Blot analysis of various cells using Tra-2alpha Polyclonal Antibody diluted at 1:500. Secondary antibody was diluted at 1:20000.



Immunofluorescence analysis of HeLa cells, using TRA-2 alpha Antibody. The picture on the right is blocked with the synthesized peptide.



Immunohistochemistry analysis of paraffin-embedded human brain tissue, using TRA-2 alpha Antibody. The picture on the right is blocked with the synthesized peptide.



Western blot analysis of lysates from HUVEC cells, using TRA-2 alpha Antibody. The lane on the right is blocked with the synthesized peptide.

Submit a product review to [Biocompare.com](https://www.biocompare.com)

Submit a review of this product to [Biocompare.com](https://www.biocompare.com) to receive a \$20 Amazon.com giftcard! Your reviews help your fellow scientists make the right decisions. Thank you for your contribution.



Anti-TRA-2 alpha Antibody

For Research Use Only. Not for use in diagnostic procedures.