

Anti-DYR1A DYRK1A Antibody

Catalog Number: A30487

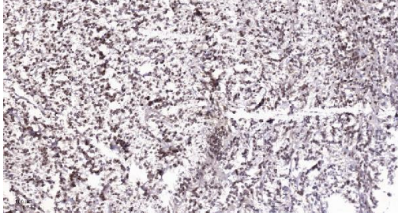
Overview

Product Name	Anti-DYR1A DYRK1A Antibody
Reactive Species	Human, Mouse, Rat
Description	Boster Bio Anti-DYR1A DYRK1A Antibody (Catalog# A30487). Tested in WB, IHC, ICC, IF, ELISA applications. This antibody reacts with Human, Mouse, Rat.
Application	ELISA, IF, IHC, ICC, WB
Clonality	Polyclonal
Formulation	PBS containing 50% glycerol, 0.5% stabilizing protein and 0.02% sodium azide. This antibody is supplied in a stabilized formulation. Compatibility with conjugation reactions depends on the chemistry of the conjugation method used. For conjugation methods that are not compatible with the stabilizing components present in this formulation, a carrier-free antibody format is required.
Storage Instructions	Store at -20°C for one year. For short-term storage and frequent use, store at 4°C for up to one month. Avoid repeated freeze-thaw cycles.
Host	Rabbit
Uniprot ID	Q13627

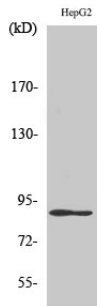
Technical Details

Immunogen	A peptide derived from human DYR1A. Immunogen sequence location: 21-70
Isotype	Rabbit IgG
Form	Liquid
Concentration	0.5-1mg/ml, actual concentration vary by lot. Use suggested dilution ratio to decide dilution procedure.
Purification	The antibody was purified from rabbit antiserum by affinity-chromatography using immunogen.
Suggested Dilutions	WB 1:500 - 1:2000. IHC 1:100 - 1:300. ICC/IF 1:200 - 1:1000. ELISA: 1:20000. Not yet tested in other applications.

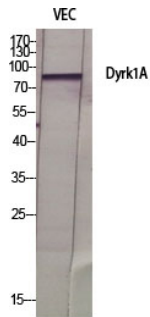
Anti-DYR1A DYRK1A Antibody (A30487) Images



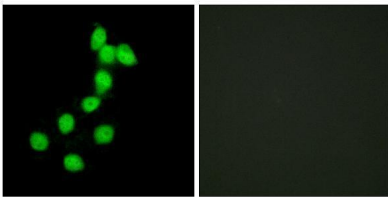
Immunohistochemical analysis of paraffin-embedded human Colon cancer. 1, Antibody was diluted at 1:200(4° overnight). 2, Tris-EDTA,pH9.0 was used for antigen retrieval. 3,Secondary antibody was diluted at 1:200(room temperature, 45min).



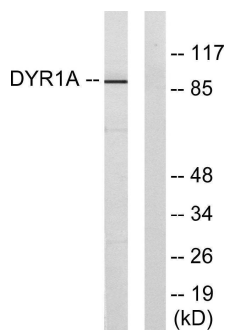
Western Blot analysis of HepG2 cells using Dyrk1A Polyclonal Antibody diluted at 1:500.



Western Blot analysis of various cells using Dyrk1A Polyclonal Antibody diluted at 1:500.



Immunofluorescence analysis of HepG2 cells, using DYR1A Antibody. The picture on the right is blocked with the synthesized peptide.



Western blot analysis of lysates from HepG2 cells, using DYR1A Antibody. The lane on the right is blocked with the synthesized peptide.

Submit a review of this product to Biocompare.com to receive a \$20 Amazon.com giftcard! Your reviews help your fellow scientists make the right decisions. Thank you for your contribution.



Anti-DYR1A DYRK1A Antibody

For Research Use Only. Not for use in diagnostic procedures.