

Anti-PLCH GPAT3 Antibody

Catalog Number: A30503

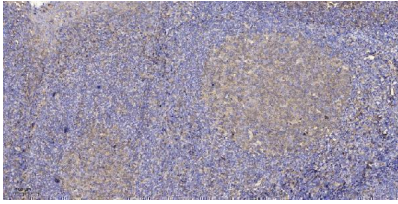
Overview

Product Name	Anti-PLCH GPAT3 Antibody
Reactive Species	Human, Mouse, Rat
Description	Boster Bio Anti-PLCH GPAT3 Antibody (Catalog# A30503). Tested in WB, IHC, ICC, IF, ELISA applications. This antibody reacts with Human, Mouse, Rat.
Application	ELISA, IF, IHC, ICC, WB
Clonality	Polyclonal
Formulation	PBS containing 50% glycerol, 0.5% stabilizing protein and 0.02% sodium azide. This antibody is supplied in a stabilized formulation. Compatibility with conjugation reactions depends on the chemistry of the conjugation method used. For conjugation methods that are not compatible with the stabilizing components present in this formulation, a carrier-free antibody format is required.
Storage Instructions	Store at -20°C for one year. For short-term storage and frequent use, store at 4°C for up to one month. Avoid repeated freeze-thaw cycles.
Host	Rabbit
Uniprot ID	Q53EU6

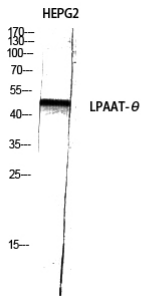
Technical Details

Immunogen	A peptide derived from human AGPAT9. Immunogen sequence location: 381-430
Isotype	Rabbit IgG
Form	Liquid
Concentration	0.5-1mg/ml, actual concentration vary by lot. Use suggested dilution ratio to decide dilution procedure.
Purification	The antibody was purified from rabbit antiserum by affinity-chromatography using immunogen.
Suggested Dilutions	WB 1:500 - 1:2000. IHC 1:100 - 1:300. ICC/IF 1:200 - 1:1000. ELISA: 1:10000. Not yet tested in other applications.

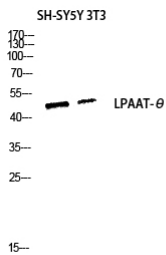
Anti-PLCH GPAT3 Antibody (A30503) Images



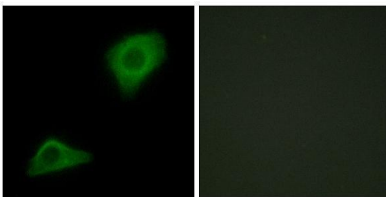
Immunohistochemical analysis of paraffin-embedded human tonsil. 1, Antibody was diluted at 1:200(4° overnight). 2, Tris-EDTA,pH9.0 was used for antigen retrieval. 3,Secondary antibody was diluted at 1:200(room temperature, 30min).



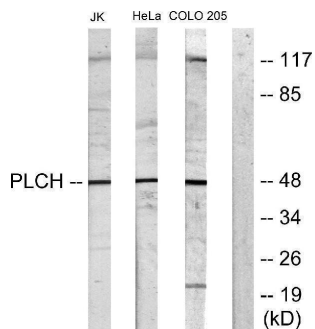
Western Blot analysis of HEPG2 using LPAAT-theta Polyclonal Antibody diluted at 1:1000



Western blot analysis of SH-SY5Y 3T3 lysis using LPAAT-theta antibody. Antibody was diluted at 1:1000



Immunofluorescence analysis of HepG2 cells, using PLCH Antibody. The picture on the right is blocked with the synthesized peptide.



Western blot analysis of lysates from Jurkat cells, COLO205 cells, HeLa cells, and HUVEC cells, using PLCH Antibody. The lane on the right is blocked with the synthesized peptide.

Submit a product review to [Biocompare.com](https://www.biocompare.com)

Submit a review of this product to [Biocompare.com](https://www.biocompare.com) to receive a \$20 Amazon.com giftcard! Your



reviews help your fellow scientists make the right decisions. Thank you for your contribution.

Anti-PLCH GPAT3 Antibody

For Research Use Only. Not for use in diagnostic procedures.