

## Anti-LARP/SEPTIN1 Antibody Picoband®

Catalog Number: A30537-1

### About SEPTIN1

Septin-1 is a protein that in humans is encoded by the SEPTIN1 gene. This gene is a member of the septin family of GTPases. Members of this family are required for cytokinesis and the maintenance of cellular morphology. This gene encodes a protein that can form homo- and heterooligomeric filaments, and may contribute to the formation of neurofibrillary tangles in Alzheimer's disease. Alternatively spliced transcript variants have been found but the full-length nature of these variants has not been determined.

### Overview

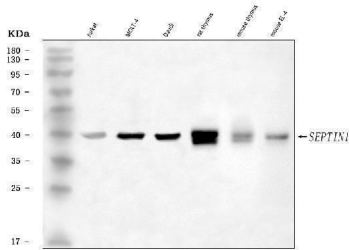
Product Name	Anti-LARP/SEPTIN1 Antibody Picoband®
Reactive Species	Human, Mouse, Rat
Description	Boster Bio Anti-LARP/SEPTIN1 Antibody Picoband® catalog # A30537-1. Tested in Flow Cytometry, WB applications. This antibody reacts with Human, Mouse, Rat. The brand Picoband indicates this is a premium antibody that guarantees superior quality, high affinity, and strong signals with minimal background in Western blot applications. Only our best-performing antibodies are designated as Picoband, ensuring unmatched performance.
Application	Flow Cytometry, WB
Clonality	Polyclonal
Formulation	Each vial contains 4 mg Trehalose, 0.9 mg NaCl, 0.2 mg Na <sub>2</sub> HPO <sub>4</sub> .
Storage Instructions	At -20°C for one year from date of receipt. After reconstitution, at 4°C for one month. It can also be aliquotted and stored frozen at -20°C for six months. Avoid repeated freezing and thawing.
Host	Rabbit
Uniprot ID	Q8WYJ6

### Technical Details

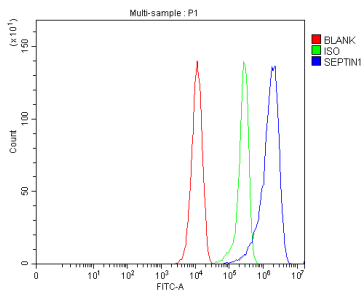
Immunogen	A synthetic peptide corresponding to a sequence at the C-terminus of human LARP/SEPTIN1, identical to the related mouse and rat sequences.
Recommended Detection Systems	Boster recommends Enhanced Chemiluminescent Kit with anti-Rabbit IgG (EK1002) for Western blot.
Cross Reactivity	No cross-reactivity with other proteins.
Isotype	Rabbit IgG
Form	Lyophilized
Concentration	Adding 0.2 ml of distilled water will yield a concentration of 500 ug/ml.

Purification	Immunogen affinity purified.
Suggested Dilutions	Western blot, 0.25-0.5 ug/ml, Human, Mouse, Rat Flow Cytometry (Fixed), 1-3 ug/1x10 <sup>6</sup> cells, Mouse

## Anti-LARP/SEPTIN1 Antibody Picoband® (A30537-1) Images



Western blot analysis of LARP/SEPTIN1 using anti-LARP/SEPTIN1 antibody (A30537-1). Electrophoresis was performed on a 5-20% SDS-PAGE gel at 70V (Stacking gel) / 90V (Resolving gel) for 2-3 hours. The sample well of each lane was loaded with 30 ug of sample under reducing conditions. Lane 1: human Jurkat whole cell lysates, Lane 2: human MOLT-4 whole cell lysates, Lane 3: human Daudi whole cell lysates, Lane 4: rat thymus tissue lysates, Lane 5: mouse thymus tissue lysates, Lane 6: mouse EL-4 whole cell lysates. red to a nitrocellulose membrane at 150 mA for 50-90 minutes. Blocked the membrane with 5% non-fat milk/TBS for 1.5 hour at RT. The membrane was incubated with rabbit anti-LARP/SEPTIN1 antigen affinity purified polyclonal antibody (Catalog # A30537-1) at 0.5 ug/mL overnight at 4°C, then washed with TBS-0.1%Tween 3 times with 5 minutes each and probed with a goat anti-rabbit IgG-HRP secondary antibody at a dilution of 1:5000 for 1.5 hour at RT. The signal is developed using an Enhanced Chemiluminescent detection (ECL) kit (Catalog # EK1002) with Tanon 5200 system. A specific band was detected for LARP/SEPTIN1 at approximately 40 kDa. The expected band size for LARP/SEPTIN1 is at 40 kDa.



Flow Cytometry analysis of RAW264.7 cells using anti-LARP/SEPTIN1 antibody (A30537-1). Overlay histogram showing RAW264.7 cells stained with A30537-1 (Blue line). To facilitate intracellular staining, cells were fixed with 4% paraformaldehyde and permeabilized with permeabilization buffer. The cells were blocked with 10% normal goat serum. And then incubated with rabbit anti-LARP/SEPTIN1 Antibody (A30537-1, 1 ug/1x10<sup>6</sup> cells) for 30 min at 20°C. DyLight®488 conjugated goat anti-rabbit IgG (BA1127, 5-10 ug/1x10<sup>6</sup> cells) was used as secondary antibody for 30 minutes at 20°C. Isotype control antibody (Green line) was rabbit IgG (1 ug/1x10<sup>6</sup>) used under the same conditions. Unlabelled sample without incubation with primary antibody and secondary antibody (Red line) was used as a blank control.

Submit a product review to [Biocompare.com](https://www.biocompare.com)

Submit a review of this product to [Biocompare.com](https://www.biocompare.com) to receive a \$20 Amazon.com giftcard! Your reviews help your fellow scientists make the right decisions. Thank you for your contribution.



Anti-LARP/SEPTIN1 Antibody

For Research Use Only. Not for use in diagnostic procedures.