

## Anti-TF3B BRF1 Antibody

Catalog Number: A30544

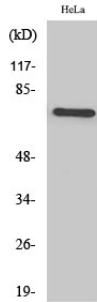
### Overview

|                      |   |
|----------------------|---|
| Product Name         | Anti-TF3B BRF1 Antibody   |
| Reactive Species     | Human, Mouse  |
| Description          | Boster Bio Anti-TF3B BRF1 Antibody (Catalog# A30544). Tested in WB, IHC, ICC, IF, ELISA applications. This antibody reacts with Human, Mouse.   |
| Application          | ELISA, IF, IHC, ICC, WB   |
| Clonality            | Polyclonal  |
| Formulation          | PBS containing 50% glycerol, 0.5% stabilizing protein and 0.02% sodium azide. This antibody is supplied in a stabilized formulation. Compatibility with conjugation reactions depends on the chemistry of the conjugation method used. For conjugation methods that are not compatible with the stabilizing components present in this formulation, a carrier-free antibody format is required. |
| Storage Instructions | Store at -20°C for one year. For short-term storage and frequent use, store at 4°C for up to one month. Avoid repeated freeze-thaw cycles.  |
| Host                 | Rabbit  |
| Uniprot ID           | Q92994  |

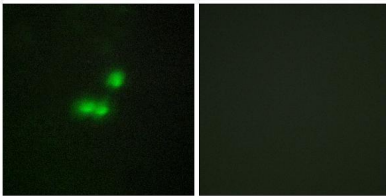
### Technical Details

|                     |   |
|---------------------|---|
| Immunogen           | A peptide derived from human TF3B. Immunogen sequence location: 231-280   |
| Isotype             | Rabbit IgG  |
| Form                | Liquid  |
| Concentration       | 0.5-1mg/ml, actual concentration vary by lot. Use suggested dilution ratio to decide dilution procedure.                      |
| Purification        | The antibody was purified from rabbit antiserum by affinity-chromatography using immunogen.                                   |
| Suggested Dilutions | WB 1:500 - 1:2000.<br>IHC 1:100 - 1:300.<br>ICC/IF 1:200 - 1:1000.<br>ELISA: 1:5000.<br>Not yet tested in other applications. |

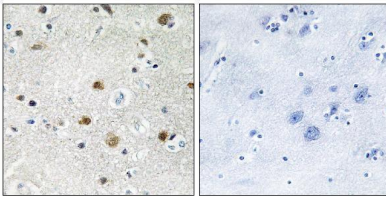
## Anti-TF3B BRF1 Antibody (A30544) Images



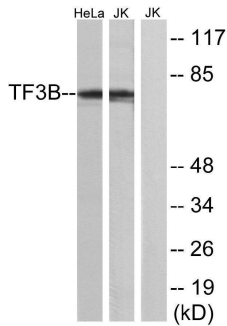
Western Blot analysis of various cells using TF3B-1 Polyclonal Antibody.



Immunofluorescence analysis of MCF7 cells, using TF3B Antibody. The picture on the right is blocked with the synthesized peptide.



Immunohistochemistry analysis of paraffin-embedded human brain tissue, using TF3B Antibody. The picture on the right is blocked with the synthesized peptide.



Western blot analysis of lysates from HeLa and Jurkat cells, using TF3B Antibody. The lane on the right is blocked with the synthesized peptide.

### Submit a product review to [Biocompare.com](https://www.biocompare.com)

Submit a review of this product to [Biocompare.com](https://www.biocompare.com) to receive a \$20 Amazon.com giftcard! Your reviews help your fellow scientists make the right decisions. Thank you for your contribution.



Anti-TF3B BRF1 Antibody

For Research Use Only. Not for use in diagnostic procedures.