

## Anti-IP3KC ITPKC Antibody

Catalog Number: A30549

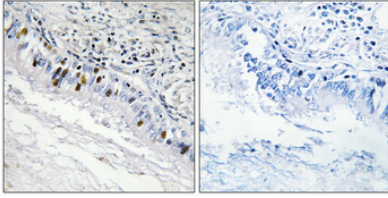
### Overview

|                      |   |
|----------------------|---|
| Product Name         | Anti-IP3KC ITPKC Antibody   |
| Reactive Species     | Human, Mouse, Rat   |
| Description          | Boster Bio Anti-IP3KC ITPKC Antibody (Catalog# A30549). Tested in WB, IHC, ICC, IF, ELISA applications. This antibody reacts with Human, Mouse, Rat.  |
| Application          | ELISA, IF, IHC, ICC, WB   |
| Clonality            | Polyclonal  |
| Formulation          | PBS containing 50% glycerol, 0.5% stabilizing protein and 0.02% sodium azide. This antibody is supplied in a stabilized formulation. Compatibility with conjugation reactions depends on the chemistry of the conjugation method used. For conjugation methods that are not compatible with the stabilizing components present in this formulation, a carrier-free antibody format is required. |
| Storage Instructions | Store at -20°C for one year. For short-term storage and frequent use, store at 4°C for up to one month. Avoid repeated freeze-thaw cycles.  |
| Host                 | Rabbit  |
| Uniprot ID           | Q96DU7  |

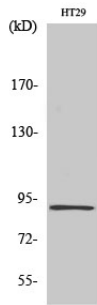
### Technical Details

|                     |  |
|---------------------|--|
| Immunogen           | A peptide derived from human IP3KC. Immunogen sequence location: 221-270                                 |
| Isotype             | Rabbit IgG   |
| Form                | Liquid   |
| Concentration       | 0.5-1mg/ml, actual concentration vary by lot. Use suggested dilution ratio to decide dilution procedure. |
| Purification        | The antibody was purified from rabbit antiserum by affinity-chromatography using immunogen.              |
| Suggested Dilutions | WB 1:500 - 1:2000.<br>IHC 1:100 - 1:300.<br>ELISA: 1:10000.<br>ICC/IF 1:50-200                           |

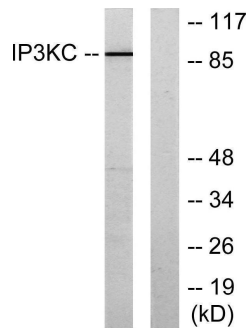
## Anti-IP3KC ITPKC Antibody (A30549) Images



Immunohistochemical analysis of paraffin-embedded Human lung cancer. Antibody was diluted at 1:100(4° overnight). High-pressure and temperature Tris-EDTA,pH8.0 was used for antigen retrieval. Negative contrl (right) obtaned from antibody was pre-absorbed by immunogen peptide.



Western Blot analysis of various cells using InsP 3-kinase C Polyclonal Antibody diluted at 1:2000



Western blot analysis of lysates from HT-29 cells, using IP3KC Antibody. The lane on the right is blocked with the synthesized peptide.

### Submit a product review to Biocompare.com

Submit a review of this product to Biocompare.com to receive a \$20 Amazon.com giftcard! Your reviews help your fellow scientists make the right decisions. Thank you for your contribution.



Anti-IP3KC ITPKC Antibody

For Research Use Only. Not for use in diagnostic procedures.