

Anti-Centrosomal protein of 170 kDa CEP170 Antibody

Catalog Number: A30606

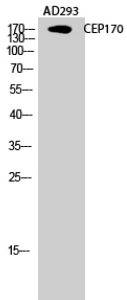
Overview

Product Name	Anti-Centrosomal protein of 170 kDa CEP170 Antibody
Reactive Species	Human, Mouse, Rat
Description	Boster Bio Anti-Centrosomal protein of 170 kDa CEP170 Antibody (Catalog# A30606). Tested in WB, IHC, ICC, IF, ELISA applications. This antibody reacts with Human, Mouse, Rat.
Application	ELISA, IF, IHC, ICC, WB
Clonality	Polyclonal
Formulation	PBS containing 50% glycerol, 0.5% stabilizing protein and 0.02% sodium azide. This antibody is supplied in a stabilized formulation. Compatibility with conjugation reactions depends on the chemistry of the conjugation method used. For conjugation methods that are not compatible with the stabilizing components present in this formulation, a carrier-free antibody format is required.
Storage Instructions	Store at -20°C for one year. For short-term storage and frequent use, store at 4°C for up to one month. Avoid repeated freeze-thaw cycles.
Host	Rabbit
Uniprot ID	Q5SW79

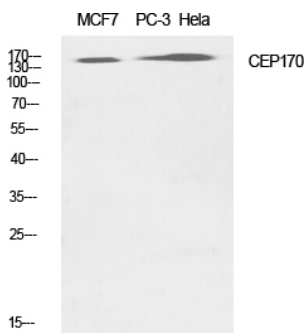
Technical Details

Immunogen	A peptide derived from human CEP170. Immunogen sequence location: 701-750
Isotype	Rabbit IgG
Form	Liquid
Concentration	0.5-1mg/ml, actual concentration vary by lot. Use suggested dilution ratio to decide dilution procedure.
Purification	The antibody was purified from rabbit antiserum by affinity-chromatography using immunogen.
Suggested Dilutions	WB 1:500 - 1:2000. IHC 1:100 - 1:300. ELISA: 1:40000. ICC/IF 1:50-200

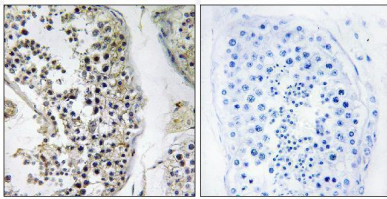
Anti-Centrosomal protein of 170 kDa CEP170 Antibody (A30606) Images



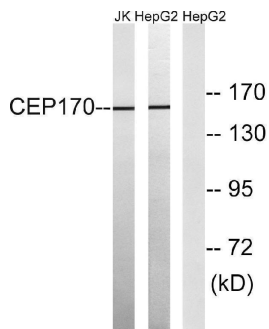
Western Blot analysis of AD293 cells using CEP170 Polyclonal Antibody diluted at 1:1000



Western Blot analysis of various cells using CEP170 Polyclonal Antibody diluted at 1:1000



Immunohistochemistry analysis of paraffin-embedded human testis tissue, using CEP170 Antibody. The picture on the right is blocked with the synthesized peptide.



Western blot analysis of lysates from HepG2 and Jurkat cells, using CEP170 Antibody. The lane on the right is blocked with the synthesized peptide.

Submit a product review to Biocompare.com

Submit a review of this product to Biocompare.com to receive a \$20 Amazon.com giftcard! Your reviews help your fellow scientists make the right decisions. Thank you for your contribution.



Anti-Centrosomal protein of 170 kDa CEP170 Antibody
For Research Use Only. Not for use in diagnostic procedures.