

Anti-RCL Antibody

Catalog Number: A30621

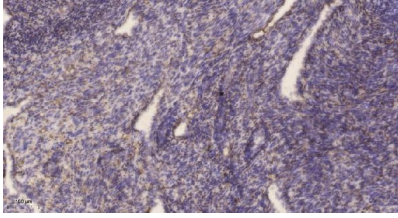
Overview

Product Name	Anti-RCL Antibody
Reactive Species	Human, Mouse, Rat
Description	Boster Bio Anti-RCL Antibody (Catalog# A30621). Tested in WB, IHC applications. This antibody reacts with Human, Mouse, Rat.
Application	IHC, WB
Clonality	Polyclonal
Formulation	PBS containing 50% glycerol, 0.5% stabilizing protein and 0.02% sodium azide. This antibody is supplied in a stabilized formulation. Compatibility with conjugation reactions depends on the chemistry of the conjugation method used. For conjugation methods that are not compatible with the stabilizing components present in this formulation, a carrier-free antibody format is required.
Storage Instructions	Store at -20°C for one year. For short-term storage and frequent use, store at 4°C for up to one month. Avoid repeated freeze-thaw cycles.
Host	Rabbit
Uniprot ID	O43598

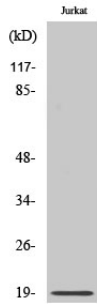
Technical Details

Immunogen	A peptide derived from human RCL. Immunogen sequence location: 1-50
Isotype	Rabbit IgG
Form	Liquid
Concentration	0.5-1mg/ml, actual concentration vary by lot. Use suggested dilution ratio to decide dilution procedure.
Purification	The antibody was purified from rabbit antiserum by affinity-chromatography using immunogen.
Suggested Dilutions	WB 1:500-2000 IHC 1:50-300

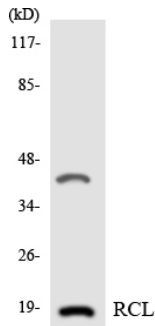
Anti-RCL Antibody (A30621) Images



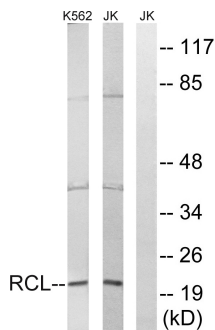
Immunohistochemical analysis of paraffin-embedded human uterus. 1, Antibody was diluted at 1:200(4° overnight). 2, Tris-EDTA,pH9.0 was used for antigen retrieval. 3,Secondary antibody was diluted at 1:200(room temperature, 45min).



Western Blot analysis of various cells using RCL Polyclonal Antibody



Western blot analysis of the lysates from 293 cells using RCL antibody.



Western blot analysis of lysates from Jurkat and K562 cells, using RCL Antibody. The lane on the right is blocked with the synthesized peptide.

Submit a product review to Biocompare.com

Submit a review of this product to Biocompare.com to receive a \$20 Amazon.com giftcard! Your reviews help your fellow scientists make the right decisions. Thank you for your contribution.



Anti-RCL Antibody

For Research Use Only. Not for use in diagnostic procedures.