

Anti-CBCP2 AGL2 Antibody

Catalog Number: A30633

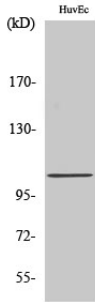
Overview

| | |
|----------------------|---|
| Product Name | Anti-CBCP2 AGL2 Antibody |
| Reactive Species | Human, Mouse |
| Description | Boster Bio Anti-CBCP2 AGL2 Antibody (Catalog# A30633). Tested in WB, IHC, ICC, IF, ELISA applications. This antibody reacts with Human, Mouse. |
| Application | ELISA, IF, IHC, ICC, WB |
| Clonality | Polyclonal |
| Formulation | PBS containing 50% glycerol, 0.5% stabilizing protein and 0.02% sodium azide. This antibody is supplied in a stabilized formulation. Compatibility with conjugation reactions depends on the chemistry of the conjugation method used. For conjugation methods that are not compatible with the stabilizing components present in this formulation, a carrier-free antibody format is required. |
| Storage Instructions | Store at -20°C for one year. For short-term storage and frequent use, store at 4°C for up to one month. Avoid repeated freeze-thaw cycles. |
| Host | Rabbit |
| Uniprot ID | Q5U5Z8 |

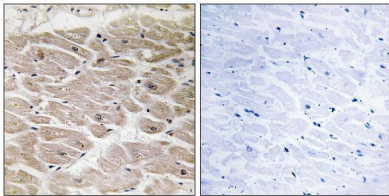
Technical Details

| | |
|---------------------|--|
| Immunogen | A peptide derived from human CBCP2. Immunogen sequence location: 731-780 |
| Isotype | Rabbit IgG |
| Form | Liquid |
| Concentration | 0.5-1mg/ml, actual concentration vary by lot. Use suggested dilution ratio to decide dilution procedure. |
| Purification | The antibody was purified from rabbit antiserum by affinity-chromatography using immunogen. |
| Suggested Dilutions | WB 1:500 - 1:2000. IHC 1:100 - 1:300. ELISA: 1:40000. ICC/IF 1:50-200 |

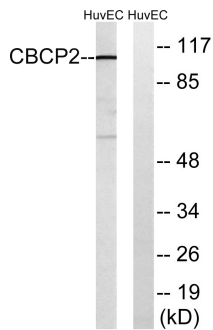
Anti-CBCP2 AGLB2 Antibody (A30633) Images



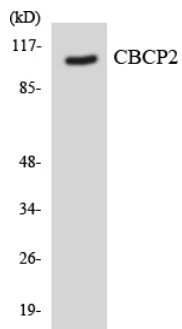
Western Blot analysis of various cells using CCP2 Polyclonal Antibody diluted at 1:2000



Immunohistochemistry analysis of paraffin-embedded human heart tissue, using CBCP2 Antibody. The picture on the right is blocked with the synthesized peptide.



Western blot analysis of lysates from HUVEC cells, using CBCP2 Antibody. The lane on the right is blocked with the synthesized peptide.



Western blot analysis of the lysates from Jurkat cells using CBCP2 antibody.

Submit a product review to Biocompare.com

Submit a review of this product to Biocompare.com to receive a \$20 Amazon.com giftcard! Your reviews help your fellow scientists make the right decisions. Thank you for your contribution.



Anti-CBCP2 AGLB2 Antibody

For Research Use Only. Not for use in diagnostic procedures.