

Anti-POLE1 Antibody

Catalog Number: A30644

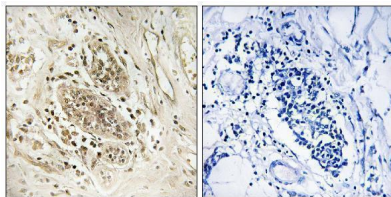
Overview

Product Name	Anti-POLE1 Antibody
Reactive Species	Human, Rat
Description	Boster Bio Anti-POLE1 Antibody (Catalog# A30644). Tested in IHC, ICC, IF, ELISA applications. This antibody reacts with Human, Rat.
Application	ELISA, IF, IHC, ICC
Clonality	Polyclonal
Formulation	PBS containing 50% glycerol, 0.5% stabilizing protein and 0.02% sodium azide. This antibody is supplied in a stabilized formulation. Compatibility with conjugation reactions depends on the chemistry of the conjugation method used. For conjugation methods that are not compatible with the stabilizing components present in this formulation, a carrier-free antibody format is required.
Storage Instructions	Store at -20°C for one year. For short-term storage and frequent use, store at 4°C for up to one month. Avoid repeated freeze-thaw cycles.
Host	Rabbit
Uniprot ID	Q07864

Technical Details

Immunogen	A peptide derived from human POLE1. Immunogen sequence location: 1261-1310
Isotype	Rabbit IgG
Form	Liquid
Concentration	0.5-1mg/ml, actual concentration vary by lot. Use suggested dilution ratio to decide dilution procedure.
Purification	The antibody was purified from rabbit antiserum by affinity-chromatography using immunogen.
Suggested Dilutions	IHC 1:100 - 1:300. ELISA: 1:40000. ICC/IF 1:50-200

Anti-POLE1 Antibody (A30644) Images



Immunohistochemistry analysis of paraffin-embedded human breast carcinoma tissue, using POLE1 Antibody. The picture on the right is blocked with the synthesized peptide.

1 Publications Citing This Product

1. PubMed ID: 23405063, Wang Ph, Gu Zh, Wan Dh, Zhu Wb, Qiu W, Weng Sp, Yu Xq, He Jg. Plos One. 2013;8(2):E52088. Doi: 10.1371/Journal.Pone.0052088. Epub 2013 Feb 6. Litopenaeus Vannamei Sterile-Alpha And Armadillo Motif Containing Protein (Lvsarm) Is Involved In Regulat...

Visit bosterbio.com/anti-pole1-antibody-a30644-boster.html to see all 1 publications.

Submit a product review to Biocompare.com

Submit a review of this product to Biocompare.com to receive a \$20 Amazon.com giftcard! Your reviews help your fellow scientists make the right decisions. Thank you for your contribution.



Anti-POLE1 Antibody

For Research Use Only. Not for use in diagnostic procedures.