

Anti-RNF144A/Rnf144 Antibody

Catalog Number: A30666

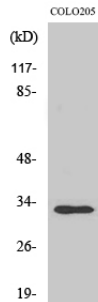
Overview

| | |
|----------------------|---|
| Product Name | Anti-RNF144A/Rnf144 Antibody |
| Reactive Species | Human, Mouse |
| Description | Boster Bio Anti-RNF144A/Rnf144 Antibody (Catalog# A30666). Tested in WB, ELISA applications. This antibody reacts with Human, Mouse. |
| Application | ELISA, WB |
| Clonality | Polyclonal |
| Formulation | PBS containing 50% glycerol, 0.5% stabilizing protein and 0.02% sodium azide. This antibody is supplied in a stabilized formulation. Compatibility with conjugation reactions depends on the chemistry of the conjugation method used. For conjugation methods that are not compatible with the stabilizing components present in this formulation, a carrier-free antibody format is required. |
| Storage Instructions | Store at -20°C for one year. For short-term storage and frequent use, store at 4°C for up to one month. Avoid repeated freeze-thaw cycles. |
| Host | Rabbit |
| Uniprot ID | P50876 |

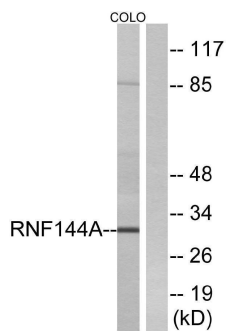
Technical Details

| | |
|---------------------|--|
| Immunogen | A peptide derived from human RNF144A. Immunogen sequence location: 151-200 |
| Isotype | Rabbit IgG |
| Form | Liquid |
| Concentration | 0.5-1mg/ml, actual concentration vary by lot. Use suggested dilution ratio to decide dilution procedure. |
| Purification | The antibody was purified from rabbit antiserum by affinity-chromatography using immunogen. |
| Suggested Dilutions | WB 1:500 - 1:2000. ELISA: 1:40000. Not yet tested in other applications. |

Anti-RNF144A/Rnf144 Antibody (A30666) Images



Western Blot analysis of various cells using UBCE7IP4 Polyclonal Antibody. Secondary antibody was diluted at 1:20000



Western blot analysis of lysates from COLO cells, using RNF144A Antibody. The lane on the right is blocked with the synthesized peptide.

Submit a product review to Biocompare.com

Submit a review of this product to Biocompare.com to receive a \$20 Amazon.com giftcard! Your reviews help your fellow scientists make the right decisions. Thank you for your contribution.



Anti-RNF144A/Rnf144 Antibody

For Research Use Only. Not for use in diagnostic procedures.