

Anti-ELOVL4 Antibody

Catalog Number: A30673

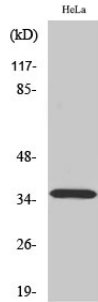
Overview

Product Name	Anti-ELOVL4 Antibody
Reactive Species	Human, Mouse
Description	Boster Bio Anti-ELOVL4 Antibody (Catalog# A30673). Tested in WB, ELISA applications. This antibody reacts with Human, Mouse.
Application	ELISA, WB
Clonality	Polyclonal
Formulation	PBS containing 50% glycerol, 0.5% stabilizing protein and 0.02% sodium azide. This antibody is supplied in a stabilized formulation. Compatibility with conjugation reactions depends on the chemistry of the conjugation method used. For conjugation methods that are not compatible with the stabilizing components present in this formulation, a carrier-free antibody format is required.
Storage Instructions	Store at -20°C for one year. For short-term storage and frequent use, store at 4°C for up to one month. Avoid repeated freeze-thaw cycles.
Host	Rabbit
Uniprot ID	Q9GZR5

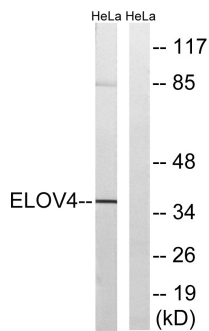
Technical Details

Immunogen	A peptide derived from human ELOVL4. Immunogen sequence location: 41-90
Isotype	Rabbit IgG
Form	Liquid
Concentration	0.5-1mg/ml, actual concentration vary by lot. Use suggested dilution ratio to decide dilution procedure.
Purification	The antibody was purified from rabbit antiserum by affinity-chromatography using immunogen.
Suggested Dilutions	WB 1:500 - 1:2000. ELISA: 1:40000. Not yet tested in other applications.

Anti-ELOVL4 Antibody (A30673) Images



Western Blot analysis of various cells using ELOVL4 Polyclonal Antibody diluted at 1:1000



Western blot analysis of lysates from HeLa cells, using ELOVL4 Antibody. The lane on the right is blocked with the synthesized peptide.

Submit a product review to Biocompare.com

Submit a review of this product to Biocompare.com to receive a \$20 Amazon.com giftcard! Your reviews help your fellow scientists make the right decisions. Thank you for your contribution.



Anti-ELOVL4 Antibody

For Research Use Only. Not for use in diagnostic procedures.