

Anti-(Mouse) Eras Antibody (N-term)

Catalog Number: A30709-1

About Eras

Ras proteins bind GDP/GTP and possess intrinsic GTPase activity. Plays an important role in the tumor-like growth properties of embryonic stem cells.

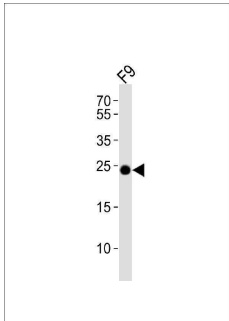
Overview

Product Name	Anti-(Mouse) Eras Antibody (N-term)
Reactive Species	Mouse
Description	Boster Bio Anti-(Mouse) Eras Antibody (N-term) (Catalog # A30709-1). Tested in WB, Flow Cytometry application(s). This antibody reacts with Mouse.
Application	Flow Cytometry, WB
Clonality	Polyclonal
Formulation	Purified polyclonal antibody supplied in PBS with 0.09% (W/V) sodium azide.
Storage Instructions	Maintain refrigerated at 2-8°C for up to 2 weeks. For long-term storage, store at -20°C in small aliquots to prevent freeze-thaw cycles.
Host	Rabbit
Uniprot ID	Q7TN89

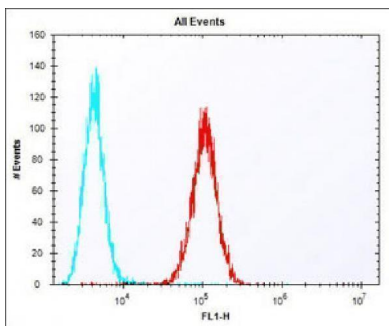
Technical Details

Immunogen	This (Mouse) Eras antibody is generated from a rabbit immunized with a KLH conjugated synthetic peptide between 19-52 amino acids from the N-terminal region of mouse Eras.
Predicted Reactive Species	Bovine, Chicken, Mouse, Pig, Rat, Zebrafish
Isotype	Rabbit IgG
Purification	This antibody is purified through a protein A column, followed by peptide affinity purification.
Suggested Dilutions	WB: 1:1000 FC: 1:25

Anti-(Mouse) Eras Antibody (N-term) (A30709-1) Images



Western blot analysis of lysate from mouse F9 cell line, using Eras Antibody (N-term). A30709-1 was diluted at 1:1000. A goat anti-rabbit IgG H&L (HRP) at 1:10000 dilution was used as the secondary antibody. Lysate at 20ug.



Overlay histogram showing F9 cells stained with A30709-1 (red line). The cells were fixed with 2% paraformaldehyde (10 min) and then permeabilized with 90% methanol for 10 min. The cells were then incubated in 2% bovine serum albumin to block non-specific protein-protein interactions followed by the antibody (A30709-1, 1:25 dilution) for 60 min at 37°C. The secondary antibody used was Alexa Fluor® 488 goat anti-rabbit IgG (H+L) at 1/400 dilution for 40 min at 37°C. Isotype control antibody (blue line) was rabbit IgG1 (1ug/1x10⁶ cells) used under the same conditions. Acquisition of >10, 000 events was performed.

Submit a product review to [Biocompare.com](https://www.biocompare.com)

Submit a review of this product to [Biocompare.com](https://www.biocompare.com) to receive a \$20 Amazon.com giftcard! Your reviews help your fellow scientists make the right decisions. Thank you for your contribution.



Anti-(Mouse) Eras Antibody (N-term)

For Research Use Only. Not for use in diagnostic procedures.