

Anti-IL28A Antibody

Catalog Number: A30781

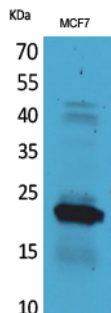
Overview

Product Name	Anti-IL28A Antibody
Reactive Species	Human, Mouse, Rat
Description	Boster Bio Anti-IL28A Antibody (Catalog# A30781). Tested in WB, IHC, ICC, IF, ELISA applications. This antibody reacts with Human, Mouse, Rat.
Application	ELISA, IF, IHC, ICC, WB
Clonality	Polyclonal
Formulation	PBS containing 50% glycerol, 0.5% stabilizing protein and 0.02% sodium azide. This antibody is supplied in a stabilized formulation. Compatibility with conjugation reactions depends on the chemistry of the conjugation method used. For conjugation methods that are not compatible with the stabilizing components present in this formulation, a carrier-free antibody format is required.
Storage Instructions	Store at -20°C for one year. For short-term storage and frequent use, store at 4°C for up to one month. Avoid repeated freeze-thaw cycles.
Host	Rabbit
Uniprot ID	Q8IZJ0

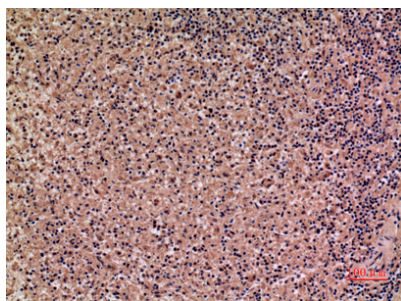
Technical Details

Immunogen	A peptide derived from the C-terminal region of human IL28A. Immunogen sequence location: 131 - 180
Isotype	Rabbit IgG
Form	Liquid
Concentration	0.5-1mg/ml, actual concentration vary by lot. Use suggested dilution ratio to decide dilution procedure.
Purification	The antibody was affinity-purified from rabbit antiserum by affinity-chromatography using peptide.
Suggested Dilutions	WB 1:500 - 1:2000. IHC: 1:100-1:300. ELISA: 1:20000. ICC/IF 1:50-200

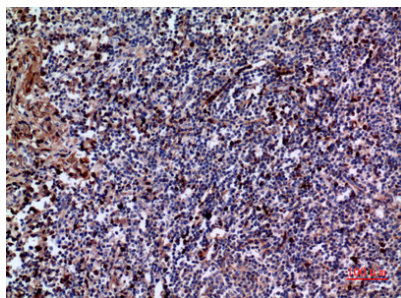
Anti-IL28A Antibody (A30781) Images



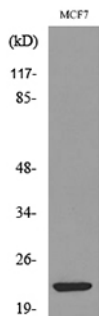
Western Blot analysis of MCF7 cells using IL-28 Polyclonal Antibody. Secondary antibody was diluted at 1:20000



Immunohistochemical analysis of paraffin-embedded human spleen, antibody was diluted at 1:100



Immunohistochemical analysis of paraffin-embedded human tonsil, antibody was diluted at 1:100



Western blot analysis of lysate from MCF7 cells, using IL28A Antibody.

Submit a product review to [Biocompare.com](https://www.biocompare.com)

Submit a review of this product to [Biocompare.com](https://www.biocompare.com) to receive a \$20 Amazon.com giftcard! Your reviews help your fellow scientists make the right decisions. Thank you for your contribution.



For Research Use Only. Not for use in diagnostic procedures.