

Anti-EMR3 ADGRE3 Antibody

Catalog Number: A30788

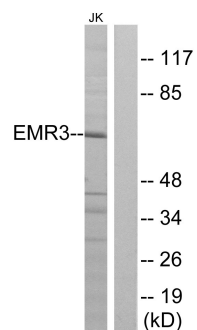
Overview

Product Name	Anti-EMR3 ADGRE3 Antibody
Reactive Species	Human, Mouse, Rat
Description	Boster Bio Anti-EMR3 ADGRE3 Antibody (Catalog# A30788). Tested in WB, IF, ICC, ELISA applications. This antibody reacts with Human, Rat, Mouse.
Application	ELISA, IF, ICC, WB
Clonality	Polyclonal
Formulation	PBS containing 50% glycerol, 0.5% BSA and 0.02% sodium azide.
Storage Instructions	Store at -20°C for one year. For short-term storage and frequent use, store at 4°C for up to one month. Avoid repeated freeze-thaw cycles.
Host	Rabbit
Uniprot ID	Q9BY15

Technical Details

Immunogen	A peptide derived from human EMR3. Immunogen sequence location: 603 - 652
Isotype	Rabbit IgG
Form	Liquid
Concentration	0.5-1mg/ml, actual concentration vary by lot. Use suggested dilution ratio to decide dilution procedure.
Purification	The antibody was purified from rabbit antiserum by affinity-chromatography using immunogen.
Suggested Dilutions	Dilute the sample so that the expected range of concentrations fall within the detection range of this kit. If the expected range of concentration is unknown, a pilot test should be conducted to decide the optimal dilution ratio for your samples. Some PubMed article(s) citing the expression level of this target are as follows: Boster Bio's internal QC testing used: Western Blot, 1:500 - 1:2000 Immunofluorescence, 1:200 - 1:1000 ELISA, 1:10000 Not yet tested in other applications.

Anti-EMR3 ADGRE3 Antibody (A30788) Images



Western blot analysis of lysates from Jurkat cells, using EMR3 Antibody. The lane on the right is blocked with the synthesized peptide.

Submit a product review to Biocompare.com

Submit a review of this product to Biocompare.com to receive a \$20 Amazon.com giftcard! Your reviews help your fellow scientists make the right decisions. Thank you for your contribution.



Anti-EMR3 ADGRE3 Antibody