

Anti-MTR1B MTNR1B Antibody

Catalog Number: A30844

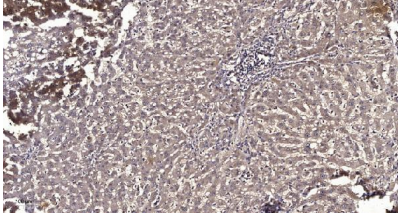
Overview

Product Name	Anti-MTR1B MTNR1B Antibody
Reactive Species	Human
Description	Boster Bio Anti-MTR1B MTNR1B Antibody (Catalog# A30844). Tested in WB, IHC applications. This antibody reacts with Human.
Application	IHC, WB
Clonality	Polyclonal
Formulation	PBS containing 50% glycerol, 0.5% stabilizing protein and 0.02% sodium azide. This antibody is supplied in a stabilized formulation. Compatibility with conjugation reactions depends on the chemistry of the conjugation method used. For conjugation methods that are not compatible with the stabilizing components present in this formulation, a carrier-free antibody format is required.
Storage Instructions	Store at -20°C for one year. For short-term storage and frequent use, store at 4°C for up to one month. Avoid repeated freeze-thaw cycles.
Host	Rabbit
Uniprot ID	P49286

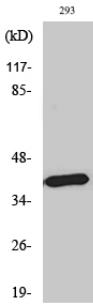
Technical Details

Immunogen	A peptide derived from human MTR1B. Immunogen sequence location: 301 - 350
Isotype	Rabbit IgG
Form	Liquid
Concentration	0.5-1mg/ml, actual concentration vary by lot. Use suggested dilution ratio to decide dilution procedure.
Purification	The antibody was purified from rabbit antiserum by affinity-chromatography using immunogen.
Suggested Dilutions	WB 1:500-2000 IHC 1:50-300

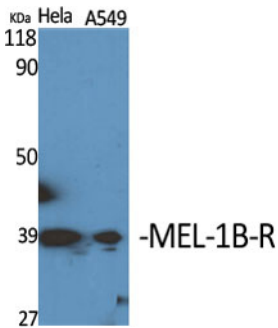
Anti-MTR1B MTNR1B Antibody (A30844) Images



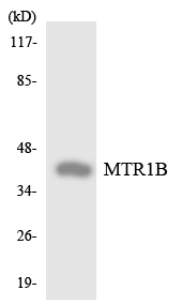
Immunohistochemical analysis of paraffin-embedded human liver cancer. 1, Antibody was diluted at 1:200(4° overnight). 2, Tris-EDTA,pH9.0 was used for antigen retrieval. 3,Secondary antibody was diluted at 1:200(room temperature, 45min).



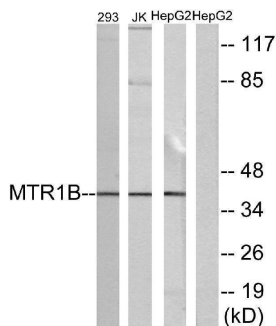
Western Blot analysis of HepG2 cells using MEL-1B-R Polyclonal Antibody diluted at 1:1000



Western Blot analysis of various cells using MEL-1B-R Polyclonal Antibody diluted at 1:1000



Western blot analysis of the lysates from HeLa cells using MTR1B antibody.



Western blot analysis of lysates from 293, Jurkat, and HepG2 cells, using MTR1B Antibody. The lane on the right is blocked with the synthesized peptide.

Submit a product review to Biocompare.com

Submit a review of this product to Biocompare.com to receive a \$20 Amazon.com giftcard! Your reviews help your fellow scientists make the right decisions. Thank you for your contribution.



Anti-MTR1B MTNR1B Antibody

For Research Use Only. Not for use in diagnostic procedures.